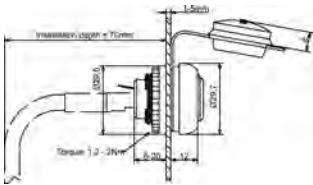


# Actuator sensor interface - RJ45 panel connector

RJ45 panel connector for front installation 22.5 mm  
female/female 1:1  
Category 5e/6

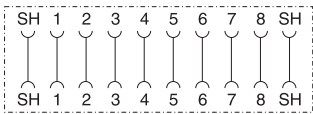


## Dimensions

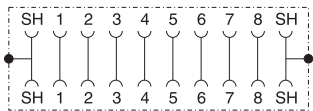


## Circuit diagram

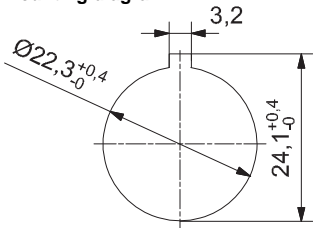
### 492075



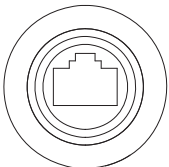
### 491075



## Mounting diagram



front view:



Description	Part-No.	Type	PU
<b>Category</b>			
Cat.5e	492075	RJ45 F/F 8/8 Cat.5e	1
Cat.6	491075	RJ45 F/F 8/8 Cat.6	1

Technical data	492075	491075
Nominal voltage		AC 24 V
Nominal voltage range	AC 50 V	AC 150 V
Rated current		1.5 A
Number of terminations		8
Cable length (m)		–
Rate of transmission	100 MHz	250 MHz
Category	5e	6
Contact type		1 : 1
Shielding	shield connected through	360° shielding
Coding		–

General	
Form	RJ45
Rated insulation voltage (EN 50178)	–
Test voltage	–
Pollution degree	3
Insulation resistance	≥100 MΩ
Contact resistance	≤30 mΩ
Class of flammability according to UL 94	V0
Protection class	IP 65 and NEMA UL Type 12 in closed and IP 20 in inserted condition
Housing material	PA-GF25; PBT Gf20; cover TPU
Cover	TPU
Contact material	CuSn, gold-plated
Field installation	Front plate cutout D=22.5mm
Installation depth	approx. 70 mm
Cable construction	8 (4-pair)
Cable jacket	–
Cable diameter	–
Bending radius	–
Operation temperature range	-25 °C – 70 °C
Storage temperature range	-25 °C – 80 °C
Mechanical service life	<750 insertion cycles
Dimension	(?×D) 29.5 × 29 mm
Weight (kg/piece)	0.016
Approvals	cULus
Standards	–