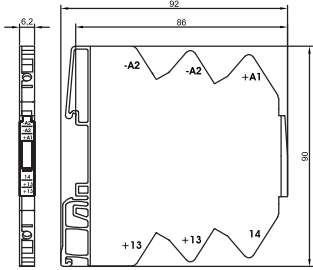


# Interface Technology · Microcompact Solid State Relay

Semiconductor relay, 2-conductor technology  
 Switching element max. DC 24 V/10 A, AC 230 V/0.75 A  
 Screw-/ Spring terminal

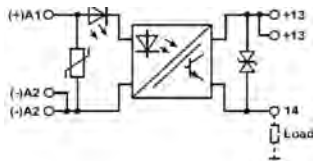


## Dimensions

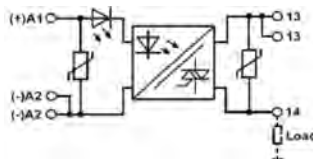


## PIN assignment

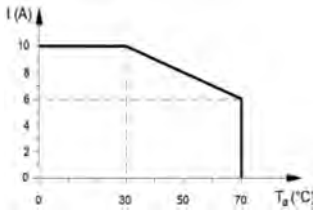
76x120, 76x320, 76x321, 76x322



76x323, 76x340



## Derating



Description	Part-No.	Type	PU	
<b>Screw terminal</b>				
Nominal voltage	DC 5 V	760120	OT 7-0120	5
load	DC 24 V/0.5 A			
	DC 24 V	760320	OT 7-0320	5
	DC 24 V/0.5 A			
	DC 24 V	760321	OT 7-0321	5
	DC 24 V/2 A			
	DC 24 V	760322	OT 7-0322	5
	DC 24 V/5 A			
	DC 24 V	760323	OT 7-0323	5
	DC 24 V/10 A			
	DC 24 V	760340	OT 7-0340	5
	AC 230 V/0.75A			

<b>Spring terminal</b>				
Nominal voltage	DC 5 V	761120	OT 7-1120	5
load	DC 24 V/0.5 A			
	DC 24 V	761320	OT 7-1320	5
	DC 24 V/0.5 A			
	DC 24 V	761321	OT 7-1321	5
	DC 24 V/2 A			
	DC 24 V	761322	OT 7-1322	5
	DC 24 V/5 A			
	DC 24 V	761323	OT 7-1323	5
	DC 24 V/10 A			
	DC 24 V	761340	OT 7-1340	5
	AC 230 V/0.75A			

Input	76x120	76x320	76x321	76x322	76x323	76x340
Input voltage range	4.0 – 6.0 V			19.2 – 30.0 V		
Rated current	> 4.5 mA			> 4 mA		
Interrupting voltage	< 2 V		< 10 V		< 15 V	
Protection device	Varistor					
Status Indication	LED yellow					
Rated frequency	–					

Output	MosFet, NO contact					Triac, NO contact (zero-voltage switching)
Switching element						
Min. switching voltage				DC 10 V		AC 20 V
Max. switching voltage				DC 48 V		AC 240 V
Min. switching current	1 mA	10 mA		1 mA	10 A (Derating)	5 mA
Max. switching current	0.5 A		2 A	5 A		0.75 A

Inrush current	–					
Leakage current	< 50 µA					1 mA
Switch-on delay	< 150 µs	< 250 µs		< 150 µs		< 10 ms
Switch-off delay	< 300 µs	< 2ms		< 300 µs		< 10 ms
Switching frequency	1 kHz	50 Hz		1 kHz	100 Hz	10 Hz
Clearance/creep. dist. (contol/load side)	–					
Protection device output	Suppressor diode					Varistor

General						
Housing material	PA, UL 94-V0					
Protection class	IP 20					
Field installation	rail TS 35 (EN 50022)					
Insulation voltage input/output	– kV <sub>eff</sub>					
Safe isolation	yes					
Operation temperature range	70 °C					
Storage temperature range	-40 °C – 80 °C					
Dimensions (w × h × d)	6.2 × 90.0 × 92.0 mm					
Weight (kg/piece)	0.030					
Approvals	–					
Termination	Screw-/spring terminal 0.14–1.5 mm <sup>2</sup>					

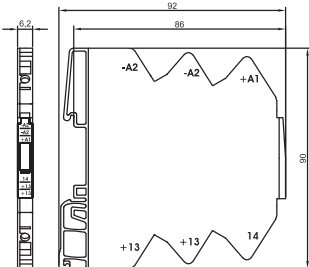
Accessories	Colour	2-pole	3-pole	4-pole	8-pole	16-pole	PU
6 A jumper comb	red	762802	762805	762812	762822	762832	10
6 A jumper comb	white	762803	762806	762813	762823	762833	10
6 A jumper comb	blue	762804	762807	762814	762824	762834	10
Accessories	Colour	Article number		Type			PU
Tag holder 4×11 mm	white	681313		BZT-0411			100

# Interface Technology - Microcompact Solid State Relay

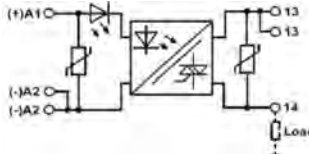
**Semiconductor relay, 2-conductor technology**  
**Switching element max. DC 24 V/0.5 A, AC 230 V/0.75 A**  
**Semiconductor relay, 2-conductor technology**



## Dimensions



## PIN assignment



Description	Part-No.	Type	PU				
<b>Screw terminal</b>							
Nominal voltage	AC 230 V	760350	OT 7-0350	5			
	AC 230 V	760341	OT 7-0341	5			
<b>Spring terminal</b>							
Nominal voltage	AC 230 V	761350	OT 7-1350	5			
	AC 230 V	761341	OT 7-1341	5			
<b>Input</b>							
	<b>76x350</b>		<b>76x341</b>				
Nominal voltage		AC 230 V					
Load	DC 24 V/0.5 A		AC 230 V/0.75 A				
Input voltage range	77.0 – 253.0 V		184.0 – 250.0 V				
Rated current		<4 mA					
Interrupting voltage	<20 V		<110 V				
Protection device		Varistor					
Status Indication		LED yellow					
Rated frequency		–					
<b>Output</b>							
Switching element	Transistor		Triac				
Min. switching voltage	DC 10 V		AC 20 V				
Max. switching voltage	DC 48 V		AC 240 V				
Min. switching current	10 mA		5 mA				
Max. switching current	0.5 A		0.75 A				
Inrush current		–					
Leakage current	50 µA		<1 mA				
Switch-on delay	< 2 ms		<10 ms				
Switch-off delay	<1 ms		<10 ms				
Switching frequency	1 kHz		3 Hz				
Clearance/creep. dist. (contol/load side)		–					
Protection device output	Suppressor diode		Varistor/RC				
<b>General</b>							
Housing material		PA, UL 94-V0					
Protection class		IP 20					
Field installation		rail TS 35 (EN 50022)					
Insulation voltage input/output		4.0 kV <sub>eff</sub>					
Safe isolation		yes					
Operation temperature range		-25 °C – 70 °C					
Storage temperature range		-40 °C – 80 °C					
Dimensions (w x h x d)		6.2 x 90.0 x 92.5 mm					
Weight (kg/piece)		0.030					
Approvals		–					
Termination		Screw terminal: 0.14–1.5 mm <sup>2</sup>		Spring terminal 0.14–1.5 mm <sup>2</sup>			
<b>Accessories</b>	<b>Colour</b>	<b>2-pole</b>	<b>3-pole</b>	<b>4-pole</b>	<b>8-pole</b>	<b>16-pole</b>	<b>PU</b>
6 A jumper comb	red	762802	762805	762812	762822	762832	10
6 A jumper comb	white	762803	762806	762813	762823	762833	10
6 A jumper comb	blue	762804	762807	762814	762824	762834	10
<b>Accessories</b>	<b>Colour</b>	<b>Article number</b>		<b>Type</b>		<b>PU</b>	
Tag holder 4x11 mm	white	681313		BZT -0411		100	
Isolation plate		760809		TP 7-0809		5	
Labels for laser printer A4 unpunched		681031		LEB-A4		1	

# Interface Technology · Microcompact Solid State Relay

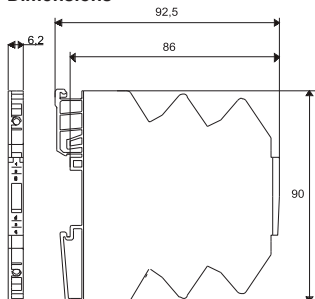
## Semiconductor relay, 2-conductor technology

Switching element AC/DC 250 V, 2 A

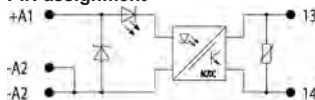
Screw-/ Spring terminal



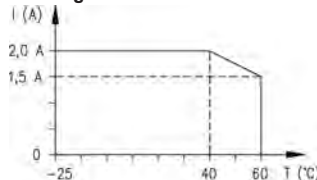
### Dimensions



### PIN assignment



### Derating



Description	Part-No.	Type	PU	
<b>Screw terminal</b>				
Nominal voltage	DC 24 V	760107	OT 7-0107 DC 24 V	5
<b>Spring terminal</b>				
Nominal voltage	DC 24 V	761107	OT 7-1107 DC 24 V	5

Input	DC 24 V
Input voltage range	18.0 – 32.0 V
Rated current	12.0 mA
Interrupting voltage	10 V
Protection device	Suppressor diode
Status Indication	LED green
Rated frequency	–

Output	
Switching element	MosFet, N/O contact
Switching element	–
Min. switching voltage	AC/DC 2 V
Max. switching voltage	AC/DC 253 V
Min. switching current	AC/DC 1 mA
Max. switching current	AC/DC 2 A (Derating)
Inrush current	AC/DC 8 A; 10 ms
Leakage current	–
Switch-on delay	0.5 ms
Switch-off delay	0.5 ms
Switching frequency	500 Hz
Clearance/creep. dist. (contol/load side)	>4 mm
Protection device output	Varistor

General	
Housing material	PA 6.6 (UL 94 V-0)
Protection class	IP 20
Field installation	rail TS 35 (EN 50022)
Insulation voltage input/output	5.0 kV <sub>eff</sub>
Safe isolation	yes
Operation temperature range	-25 °C – 60 °C
Storage temperature range	-40 °C – 80 °C
Dimensions (w × h × d)	6.2 × 90.0 × 92.5 mm
Weight (kg/piece)	0.030
Approvals	–
Termination	Screw-/spring terminal 0.5–1.5 mm <sup>2</sup>

Accessories	Colour	2-pole	3-pole	4-pole	8-pole	16-pole	PU
6 A jumper comb	red	762802	762805	762812	762822	762832	10
6 A jumper comb	white	762803	762806	762813	762823	762833	10
6 A jumper comb	blue	762804	762807	762814	762824	762834	10

Accessories	Colour	Article number	Type	PU
Tag holder 4×11 mm	white	681313	BZT -0411	100
Isolation plate		760809	TP 7-0809	5

### Comments

Inductive loads must be wired with a suitable suppressor element!