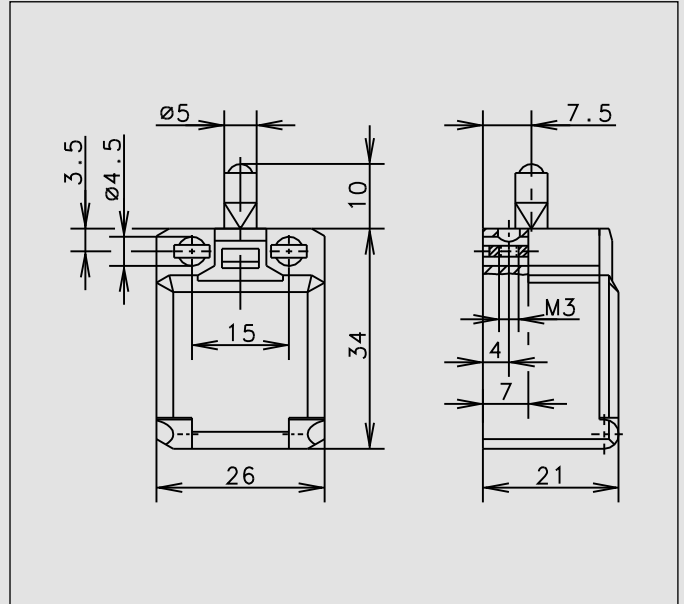


## C2



### Recommended use

Ideal for safety applications and position monitoring in confined spaces.

### Product advantages

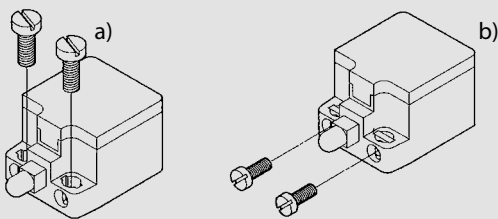
- Miniature switch for safety applications
- Two-channel safety monitoring possible
- With captive snap-on cover
- Small hysteresis in snap action system

### Design layout

- Slow-action and snap-action contacts
- Versions: 1 NC / 1NO, 2 NC, 2 NO
- All NC contacts with  $\ominus$  in the circuit diagram are positively opening contacts
- Type: Zb (galvanically isolated changeover contact)

### Mounting

- Also suitable for front mounting (depending on type)



- a) 2 round holes for M4 screws
- b) 2 Integrated nuts for front mounting for M3 screws (depending on type)

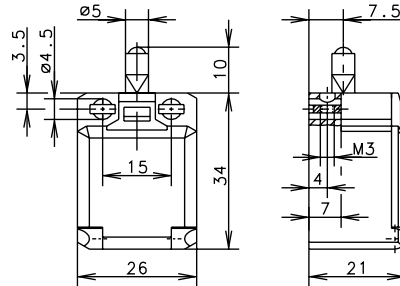
### Installation advantages

- Snap-on cover can be released with screwdriver
- Cover opening range 180° (cover can also be detached from hinge)
- Cover protects switching element during installation
- Screw connections with self-lifting clamping plates
- Cover transparent for adjustment and visual inspection
- Easy-action cover lock (close and press)

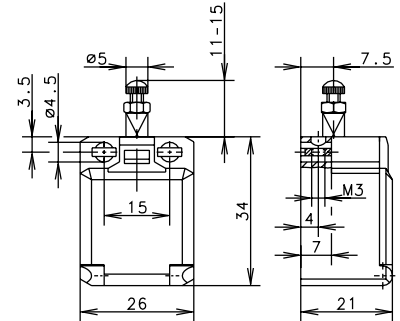
### Technical data

Electrical data		
Rated insulation voltage	$U_i$ max.	240 V AC
Conventional thermal current	$I_{the}$	10 A
Rated operating voltage	$U_e$ max.	240 V
Utilisation category	$U_e/I_e$	AC-15, $U_e/I_e$ 240 V/3 A
Short-circuit protection		Fuse 6 A gL/gG
Protection class		II, Insulated
Mechanical data		
Enclosure material		Thermoplastic, glass fibre-reinforced (UL 94-V0)
Ambient temperature		-30 °C to +80 °C
Mechanical service life		3 x 10 <sup>6</sup> switching cycles
B10d		6 Mio.
Switching frequency		≤ 100/min
Type of connection		Screw connections
Conductor cross sections		Single-wire 0.5 – 1.5 mm <sup>2</sup> or Stranded wire with ferrule 0.5 – 1.5 mm <sup>2</sup>
Cable entry		Rectangle 8.5 x 3.5 mm
Protection class		IP20 conforming to EN 60529; DIN VDE 0470 T1
Standards		
VDE 0660 T100, DIN EN 60947-1, IEC 60947-1		
VDE 0660 T200, DIN EN 60947-5-1, IEC 60947-5-1		

W



ST



Switching operation

Slow-action

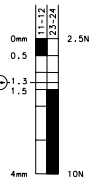
Snap-action

Slow-action

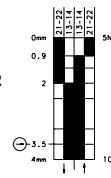
Snap-action

1 NC / 1 NO contact

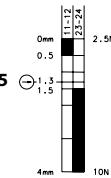
6008101001  
C2-U1Z



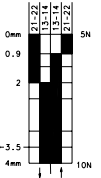
6008351002  
C2-SU1Z



6008104025  
C2-U1Z ST

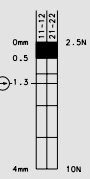


6008354026  
C2-SU1Z ST

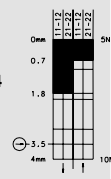


2 NC contacts

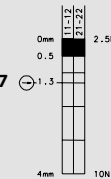
6008801003  
C2-A2Z



6008851004  
C2-SA2Z

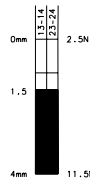


6008804027  
C2-A2Z ST

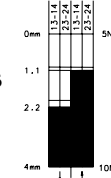


2 NO contacts

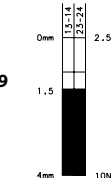
6008801005  
C2-E2



6008851006  
C2-SE2



6008804029  
C2-E2 ST



1 NC / 1 NO contact  
Overlapping

Approvals

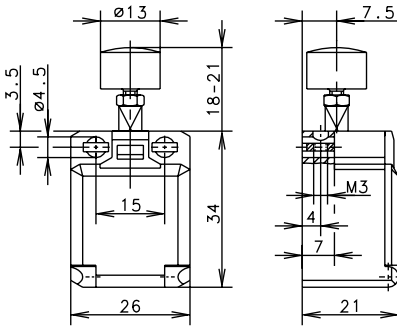
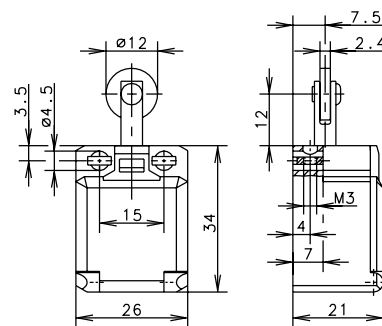
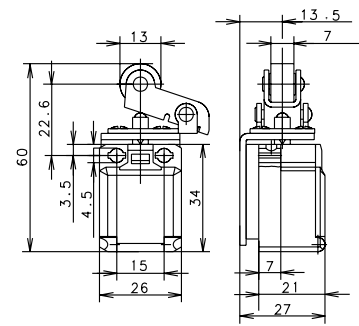
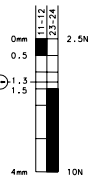
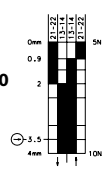
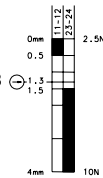
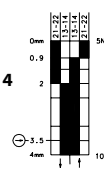
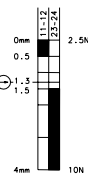
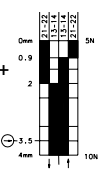


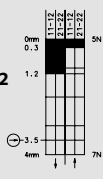
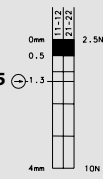
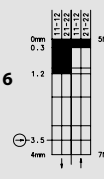
Replacement actuator: -

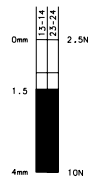
Replacement actuator: -

Special features / variants  
(on request)

Special features / variants  
● Actuator length adjustable with  
adjusting screw

**K**

**R**

**O.M.**

**Slow-action**
**Snap-action**
**6008107019**
**C2-U1Z K**

**6008357020**
**C2-SU1Z K**

**Slow-action**
**Snap-action**
**6008116013**
**C2-U1Z R**

**6008366014**
**C2-SU1Z R**

**Slow-action**
**Snap-action**
**6008101007 +  
3910190259**
**C2-U1Z O.M.**

**6008351008 +  
3910190259**
**C2-SU1Z O.M.**

**6008807021**
**C2-A2Z K**

**6008857022**
**C2-SA2Z K**

**6008816015**
**C2-A2Z R**

**6008866016**
**C2-SA2Z R**

**6008801009 +  
3910190259**
**C2-A2Z O.M.**

**6008816017**
**C2-E2 R**

**Replacement actuator: –**
**Replacement actuator: –**
**Replacement actuator: 3910190259**
**Special features / variants**

- Button actuator, for manual operation

**Special features / variants**

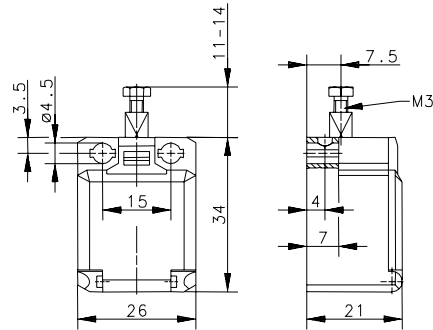
(on request)

- Also available with roller turned by 90°

**Special features / variants**

(on request)

**BISTABLE O.M.**



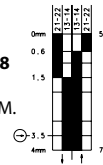
**Switching operation**

**Slow-action**

**Snap-action**

**1 NC / 1 NO contact**

**6108351008**  
C2-SU1Z  
BISTABLE O.M.



**2 NC contacts**

**2 NO contacts**

**1 NC / 1 NO contact  
Overlapping**

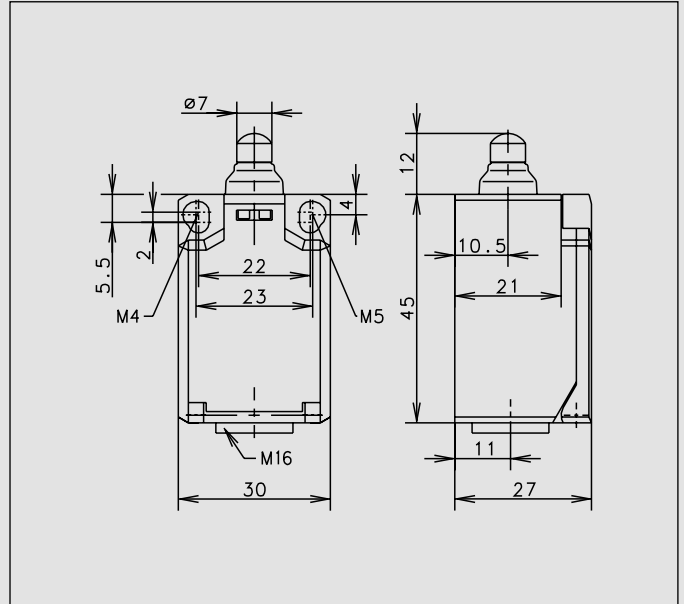
**Approvals**

**Replacement actuator: –**

**Special features / variants**

- Bistable characteristics, actuator must be returned to initial position by external actuation (pulling)
- Actuator length adjustable with M3 adjusting screw

## Ti2



### Recommended use

Ideal for safety applications and position monitoring in confined spaces with high protection class IP 65.

### Product advantages

- Compact IP 65 switch for safety applications
- Optimised size while retaining tried-and-tested connection system
- Two-channel safety monitoring possible
- With captive snap-on cover
- 2 mm contact opening width of slow-action system conforming to EN 81-1 for lift construction
- Mall hysteresis in snap action system
- Actuator can be repositioned by 4 x 90°

### Options

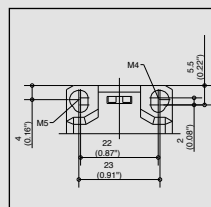
- Available with M12 connector
- AS interface variants available
- Preassembled with customer-specific cables and connectors on request

### Design layout

- Slow-action and snap-action contacts
- Versions: 1 NC / 1NO, 2 NC, 2 NO
- All NC contacts with  $\ominus$  in the circuit diagram are positively opening contacts
- Type: Zb (galvanically isolated change-over contact)

### Mounting

- Mounting dimensions conforming to DIN EN 50047
- 2 slots for adjustment with M4 screws (distance between centres 22 mm)



- Fixed positioning for safety applications with two M5 screws (distance between centres 23 mm)

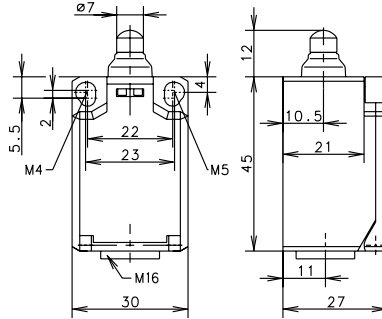
### Installation advantages

- Snap-on cover can be released with screwdriver
- Cover protects switching element during installation
- Screw connections with self-lifting clamping plates
- Cover transparent for adjustment and visual inspection
- Easy-action cover lock (close and press)

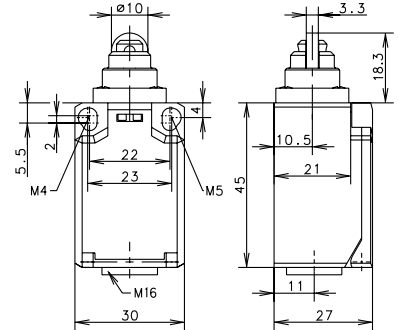
### Technical data

Electrical data		
Rated insulation voltage	$U_i$ max.	240 V AC
Conventional thermal current	$I_{thc}$	10 A
Rated operating voltage	$U_e$ max.	240 V
Utilisation category	$U_e/I_e$	AC-15, $U_e/I_e$ 240 V/3 A; DC-13, $U_e/I_e$ 240 V/0,27 A
Short-circuit protection		Fuse 6 A gL/gG
Protection class		II, Insulated
Mechanical data		
Enclosure material		Thermoplastic, glass fibre-reinforced (UL 94-V0)
Ambient temperature		-30 °C to +80 °C
Mechanical service life		3 x 10 <sup>6</sup> switching cycles
B10d		6 Mio.
Switching frequency		≤ 100/min.
Type of connection		Screw connections
Conductor cross sections		Single-wire 0.5 – 1.5 mm <sup>2</sup> or Stranded wire with ferrule 0.5 – 1.5 mm <sup>2</sup>
Cable entry		1 x M16 x 1,5
Protection class		IP65 conforming to EN 60529; DIN VDE 0470 T1
Standards		
VDE 0660 T100, DIN EN 60947-1, IEC 60947-1VDE 0660 T200, DIN EN 60947-5-1, IEC 60947-5-1		

W (Form B)



RIW (Form C)



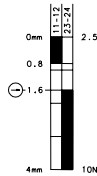
Switching operation

1 NC / 1 NO contact

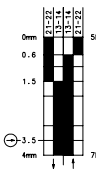
Slow-action

Snap-action

6088103001  
TI2-U1Z W



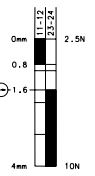
6088153002  
TI2-SU1Z W



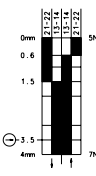
Slow-action

Snap-action

6088117007  
TI2-U1Z RIW

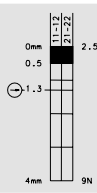


6088167008  
TI2-SU1Z RIW

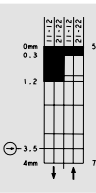


2 NC contacts

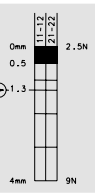
6088803003  
TI2-A2Z W



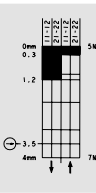
6088853004  
TI2-SA2Z W



6088817009  
TI2-A2Z RIW

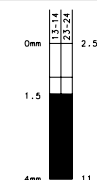


6088867010  
TI2-SA2Z RIW

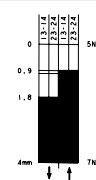


2 NO contacts

6088803005  
TI2-E2 W



6088867012  
TI2-SE2 RIW



1 NC / 1 NO contact  
Overlapping

Approvals



Replacement actuator: -

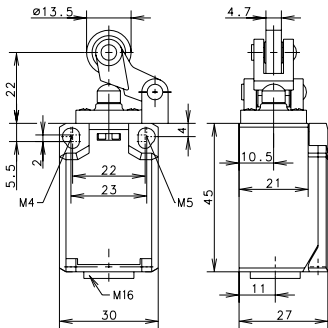
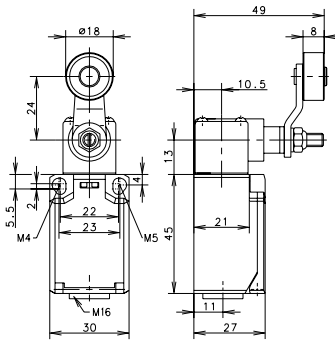
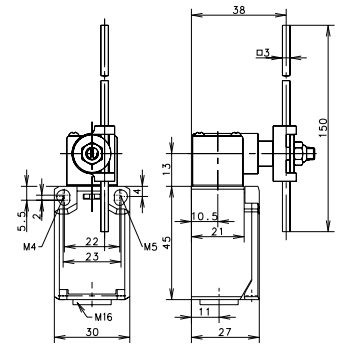
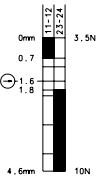
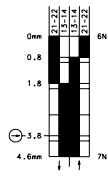
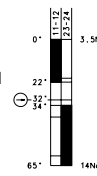
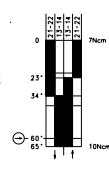
Replacement actuator: -

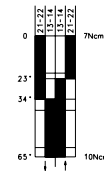
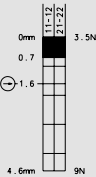
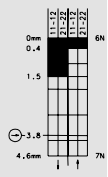
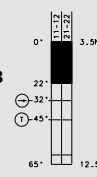
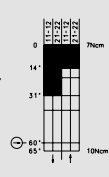
Special features / variants  
(on request)

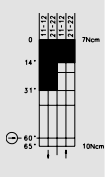
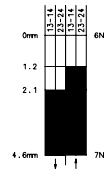
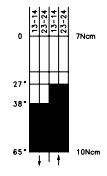
- Available with increased switching force

Special features / variants  
(on request)

- Available with increased switching force
- Available with different actuating directions
- Cannot be turned by user

**HW (Form E)**

**AH (Form A)**

**AD**

**Slow-action**
**Snap-action**
**6088121015**  
T12-U1Z HW

**6088171016**  
T12-SU1Z HW

**Slow-action**
**Snap-action**
**6088135021**  
T12-U1Z AH

**6088185022**  
T12-SU1Z AH

**Slow-action**
**Snap-action**
**6088137027**  
T12-U1 AD

**6088187028**  
T12-SU1 AD

**6088821017**  
T12-A2Z HW

**6088871018**  
T12-SA2Z HW

**6088835023**  
T12-A2Z AH

**6088885024**  
T12-SA2Z AH

**6088837029**  
T12-A2 AD

**6088887030**  
T12-SA2 AD

**6088871020**  
T12-SE2 HW

**6088887032**  
T12-SE2 AD

**Replacement actuator: 3918190681**
**Replacement actuator: 3918351166**
**Replacement actuator: 3918370986**
**Special features / variants**  
(on request)

- Available with different actuating directions
- With steel roller
- Various roller diameters

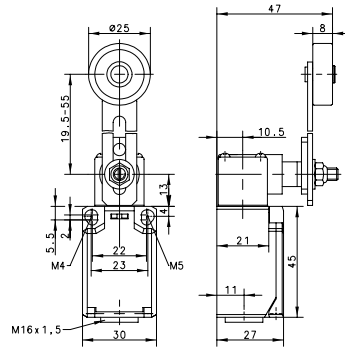
**Special features / variants**  
(on request)

- Available with different actuating directions
- With steel roller
- Various roller diameters
- Cranked or straight lever
- Various lever lengths
- With roller over switch

**Special features / variants**  
(on request)

- Available with different actuating directions
- With various actuator lengths
- Available with increased switching force

AV



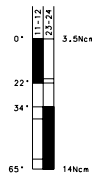
Switching operation

Slow-action

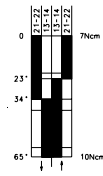
Snap-action

1 NC / 1 NO contact

6088136033  
TI2-U1 AV

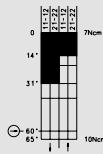


6088186034  
TI2-SU1 AV



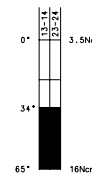
2 NC contacts

6088886036  
TI2-SA2 AV

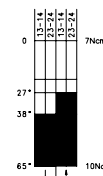


2 NO contacts

6088836037  
TI2-E2 AV



6088886038  
TI2-SE2 AV



1 NC / 1 NO contact  
Overlapping

Approvals

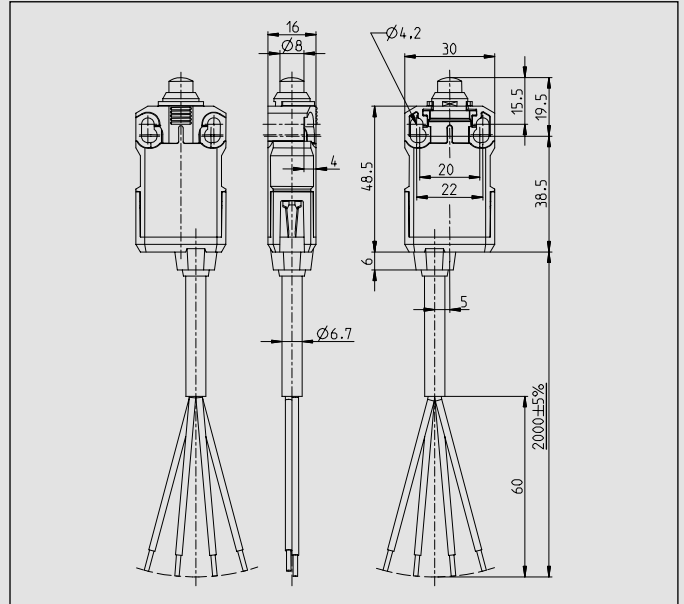
Replacement actuator: 3918360984

Special features / variants  
(on request)

- Available with different actuating directions
- Various roller diameters
- Various lever lengths
- With roller over switch



## IF



### Recommended use

Most limit switches soon come up against their limits in applications involving confined spaces and wherever high protection classes are required, not with the IF switch from BERNSTEIN. With its slim design and full IP 67 protection they are simply ideal for position monitoring and end position shutdown in safety applications.

### Product advantages

- Slim line design
- With 2 m fixed cable or AMP4 connector
- High quality plastic enclosure
- Metal actuator and mounting clip
- Small hysteresis in snap action system
- Actuator can be repositioned by 4 x 90°
- Compact IP 67 switch for safety applications
- Two-channel safety monitoring possible

### Options

- Various cable lengths available on request
- Can be preassembled with customised connectors on request
- Other cable lengths available on request

### Design layout

- Slow-action and snap-action contacts
- Versions: 1 NC / 1NO, 2 NC, 2 NO
- All NC contacts with ⊕ in the circuit diagram are positively opening contacts
- Type: Zb (galvanically isolated changeover contact)

### Mounting

- Two M4 screws for adjustment with slots
- Two M5 screws for safety applications; front mounting depending on type

### Installation advantages

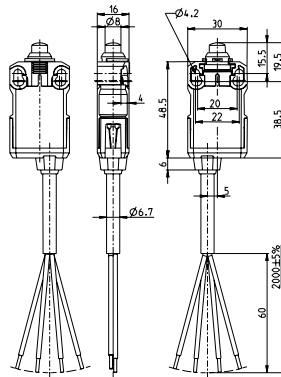
Flexibility is key in practical applications: And it is precisely here that IF switches from BERNSTEIN are a real asset. They have a modular design that makes them extremely flexible in installation and use  
**Minimum stockkeeping:** The approach direction can be quickly and easily changed by installation technician.



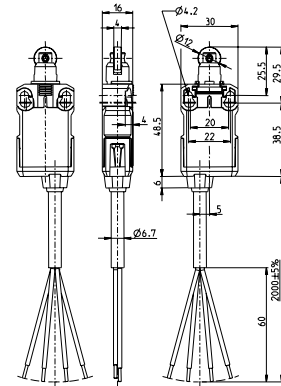
### Technical data

Electrical data		
Rated insulation voltage	$U_i$ max.	240 V AC
Conventional thermal current	$I_{the}$	10 A
Rated operating voltage	$U_e$ max.	240 V
Utilisation category		AC-15, $U_e/I_e$ 240 V/3 A
Short-circuit protection		Fuse 6 A gL/gG
Protection class		II, Insulated
Mechanical data		
Enclosure material		PA6 (glass fibre-reinforced)
Ambient temperature		-25 °C to +70 °C (Connection cable installed)
Mechanical service life		3 x 10 <sup>6</sup> switching cycles
B10d		6 Mio.
Switching frequency		≤ 30/min.
Type of connection		Cable 4 x 0.75 mm <sup>2</sup>
Protection class		IP67 conforming to EN 60529; DIN VDE 0470 T1
Standards		
VDE 0660 T100, DIN EN 60947-1, IEC 60947-1		
VDE 0660 T200, DIN EN 60947-5-1, IEC 60947-5-1		

IW



RIW



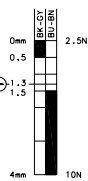
Switching operation

Slow-action      Snap-action

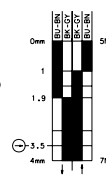
Slow-action      Snap-action

1 NC / 1 NO contact

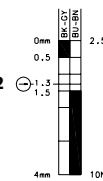
6089102001  
IF-U1Z IW



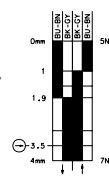
6089152006  
IF-SU1Z IW



6089117002  
IF-U1Z RIW

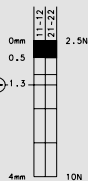


6089167007  
IF-SU1Z RIW

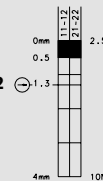


2 NC contacts

6089802011  
IF-A2Z IW



6089817012  
IF-A2Z RIW



2 NO contacts

1 NC / 1 NO contact  
Overlapping

Approvals



Replacement actuator: -

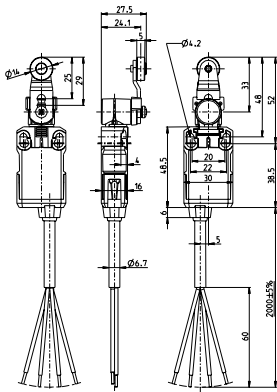
Replacement actuator: -

Special features / variants  
(on request)

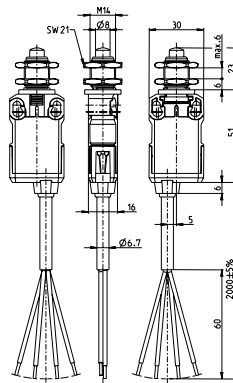
Special features / variants

- Actuator can be turned in steps of 90°

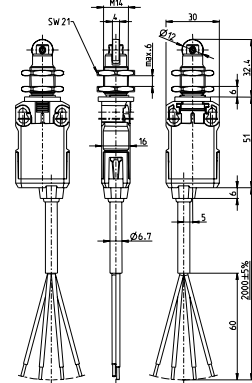
### AH



### IWF



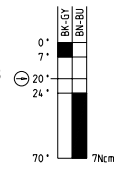
### RIWF



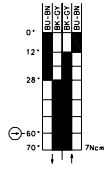
#### Slow-action

#### Snap-action

**6089135003**  
IF-U1Z AH



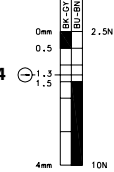
**6089185008**  
IF-SU1Z AH



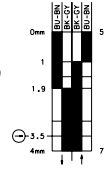
#### Slow-action

#### Snap-action

**6089102004**  
IF-U1Z IWF



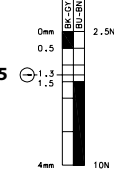
**6089152009**  
IF-SU1Z IWF



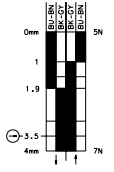
#### Slow-action

#### Snap-action

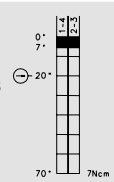
**6089117005**  
IF-U1Z RIWF



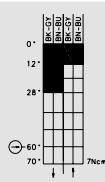
**6089167010**  
IF-SU1Z RIWF



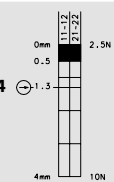
**6089835013**  
IF-A2Z AH



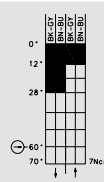
**6089885041**  
IF-SA2Z AH



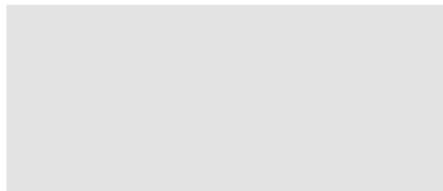
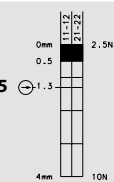
**6089802014**  
IF-A2Z IWF



**6089852043**  
IF-SA2Z IWF



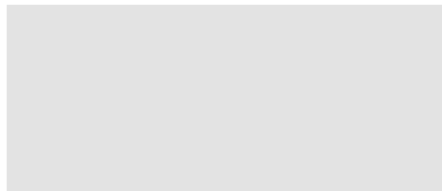
**6089817015**  
IF-A2Z RIWF



Replacement actuator: –

#### Special features / variants

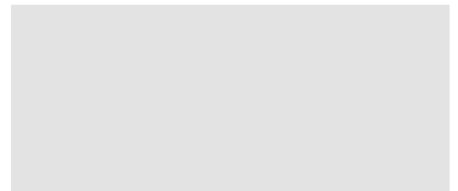
- Actuator can be turned in steps of 90°



Replacement actuator: –

#### Special features / variants

- Front mounting

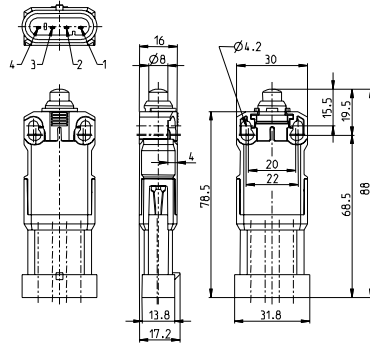


Replacement actuator: –

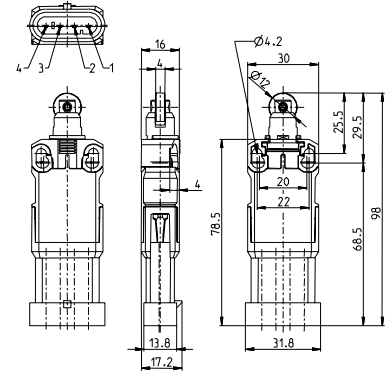
#### Special features / variants

- Front mounting
- Actuator can be turned in steps of 90°

**IW AMP4**



**RIW AMP4**



**Switching operation**

**Slow-action**

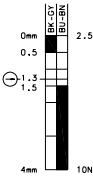
**Snap-action**

**Slow-action**

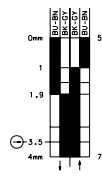
**Snap-action**

**1 NC / 1 NO contact**

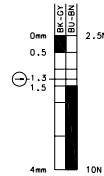
**6089102016**  
IF-U1Z IW  
AMP4



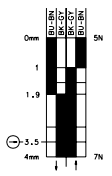
**6089152021**  
IF-SU1Z IW  
AMP4



**6089117017**  
IF-U1Z RIW  
AMP4

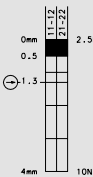


**6089167022**  
IF-SU1Z RIW  
AMP4

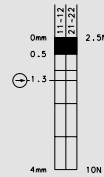


**2 NC contacts**

**6089802026**  
IF-A2Z IW  
AMP4



**6089817027**  
IF-A2Z RIW  
AMP4



**2 NO contacts**

**1 NC / 1 NO contact  
Overlapping**

**Approvals**



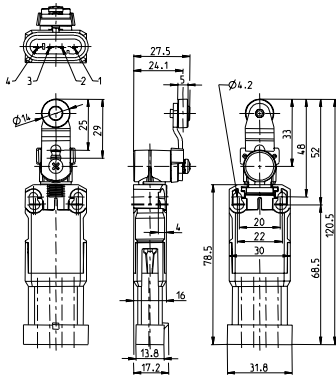
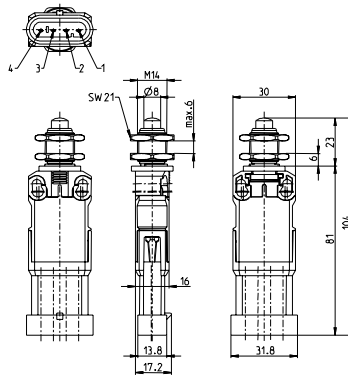
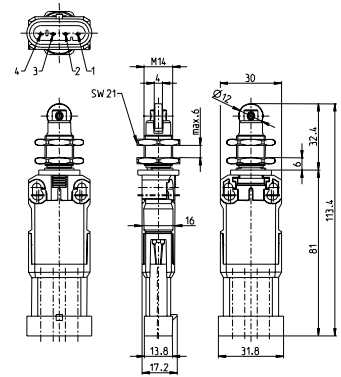
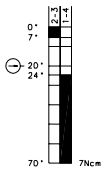
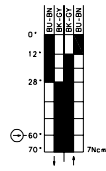
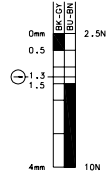
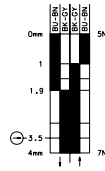
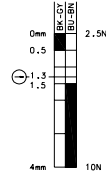
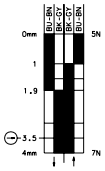
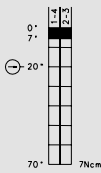
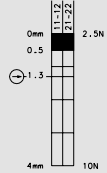
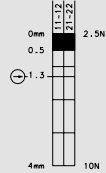
**Replacement actuator: -**

**Replacement actuator: -**

**Special features / variants**  
(on request)

**Special features / variants**

- Actuator can be turned in steps of 90

**AH AMP4**

**IWF AMP4**

**RIWF AMP4**

**Slow-action**
**Snap-action**
**6089135018**  
IF-U1Z AH  
AMP4

**6089185023**  
IF-SU1Z AH  
AMP4

**Slow-action**
**Snap-action**
**6089102019**  
IF-U1Z IWF  
AMP4

**6089152024**  
IF-SU1Z IWF  
AMP4

**Slow-action**
**Snap-action**
**6089117020**  
IF-U1Z RIWF  
AMP4

**6089167025**  
IF-SU1Z RIWF  
AMP4

**6089835028**  
IF-A2Z AH  
AMP4

**6089802029**  
IF-A2Z IWF  
AMP4

**6089817030**  
IF-A2Z RIWF  
AMP4

**Replacement actuator: –**
**Special features / variants**

- Actuator can be turned in steps of 90

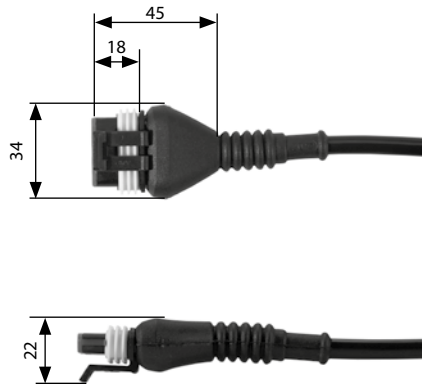

**Replacement actuator: –**
**Special features / variants**

- Front mounting


**Replacement actuator: –**
**Special features / variants**

- Front mounting
- Actuator can be turned in steps of 90

**AMP Connection cable**



**Switching operation**

**1 NC / 1 NO contact**

**Cable length 3.5 m:**  
**3251204309**  
 AN-KAB.IF 3.5M AMP4

**Cable length 5 m:**  
**3251204281**  
 AN-KAB.IF 5M AMP4

**2 NC contacts**

**Cable**  
 UL-CSA-S03VV2-F4x0.75 black n. UL2517, CSA  
 C22.2/210.2 and n. VDE 0281 part 12 n. HAR 21.12 S1

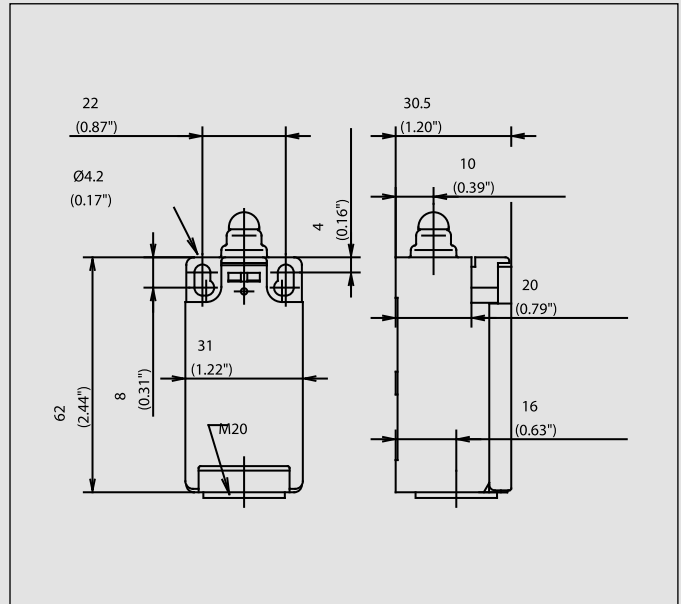
**2 NO contacts**

**Pin assignment**  
 1-GY, 2-BU, 3-BN, 4-BK

**1 NC / 1 NO contact  
 Overlapping**

**Approvals**

188



### Recommended use

Thanks to its standard dimensions as well as its wide range of contacts and actuators, this switch can be used on safety facilities and for position monitoring in virtually any industrial application.

### Product advantages

- Standard switch conforming to DIN EN 50047
- Standard actuator conforming to DIN EN 50047 (see page 16)
- Protection class IP 65 to VDE 0470 T1
- Enclosure and cover PA 6, self-extinguishing (UL-94-V0)
- Actuator can be repositioned by 4 x 90°
- Cable entry M20 x 1.5
- Connection designation conforming to DIN EN 50013

### Options

- Available with M12 connector
- AS interface variants available
- Cable entry M16 x 1.5

### Design layout

- Slow-action and snap-action contacts
- Versions: 1 NC / 1NO, 2 NC, 2 NO, overlapping contacts
- All NC contacts with  $\ominus$  in the circuit diagram are positively opening contacts
- Type: Zb (galvanically isolated changeover contact)
- Latching function on request

### Mounting

- Two M4 screws (distance between centres 22 mm), adjustment with slots
- Two M5 screws for safety applications without additional fixing element (Fig. 1)
- Additionally secured by guide plate for lateral approach forces (Fig. 2 and page 69)
- Front mounting (depending on type, Fig. 3)

### Installation advantages

- Snap-on cover can be released with screwdriver
- Cover opening range 135° (cover can also be detached from hinge)
- Cover protects switching element during installation
- Screw connections with self-lifting clamping plates
- Easy-action cover lock (close and press)
- Cover additionally secured with screw

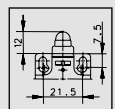


Fig. 1



Fig. 2



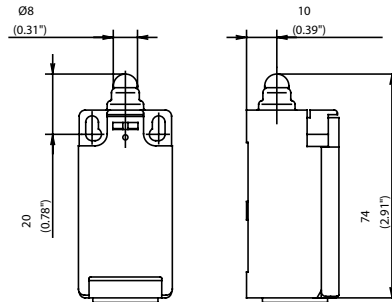
Fig. 3

### Technical data

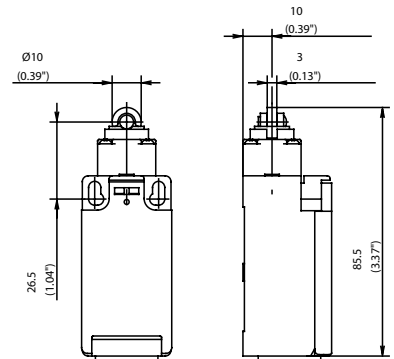
Electrical data	
Rated insulation voltage	U <sub>i</sub> max. 250 V AC
Conventional thermal current (up to) <sup>①</sup>	I <sub>the</sub> 10 A
Rated operating voltage	U <sub>e</sub> max. 240 V
Utilisation category (up to) <sup>①</sup>	AC-15, U <sub>e</sub> /I <sub>e</sub> 240 V/3 A
Short-circuit protection (up to) <sup>①</sup>	Fuse 10 A gL/gG
Protection class	II, Insulated
Mechanical data	
Enclosure material	Thermoplastic, glass fibre-reinforced (UL 94-V0)
Ambient temperature	-30 °C to +80 °C
Mechanical service life (up to) <sup>①</sup>	10 x 10 <sup>6</sup> switching cycles
B10d (up to) <sup>①</sup>	20 Mio.
Switching frequency	≤ 100/min.
Type of connection	Screw connections
Conductor cross sections	Single-wire 0.5 – 1.5 mm <sup>2</sup> or Stranded wire with ferrule 0.5 – 1.5 mm <sup>2</sup>
Cable entry	1 x M20 x 1,5
Standards	
VDE 0660 T100, DIN EN 60947-1, IEC 60947-1 VDE 0660 T200, DIN EN 60947-5-1, IEC 60947-5-1	

<sup>①</sup> Depending on switching system. See Table on Pages 70 – 73.

W (Form B)



RIWK (Form C)



Switching operation

Slow-action

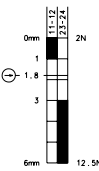
Snap-action

Slow-action

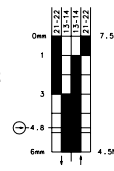
Snap-action

1 NC / 1 NO contact

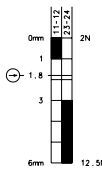
6086103008  
I88-U1Z W



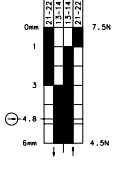
6086153012  
I88-SU1Z W



6086117017  
I88-U1Z RIWK

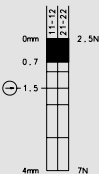


6086167018  
I88-SU1Z  
RIWK

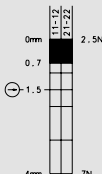


2 NC contacts

6086803013  
I88-A2Z W

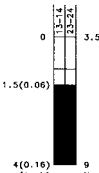


6086817087  
I88-A2Z RIWK

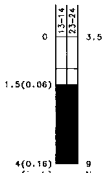


2 NO contacts

6086803014  
I88-E2 W

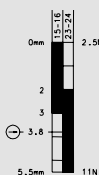


6086817071  
I88-E2 RIWK



1 NC / 1 NO contact  
Overlapping

6086303011  
I88-UV1Z W



Approvals



Replacement actuator: -

Replacement actuator: 3918161672

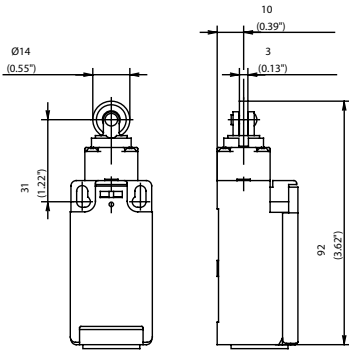
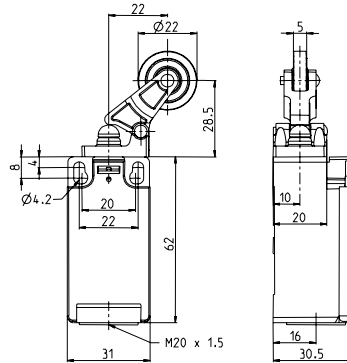
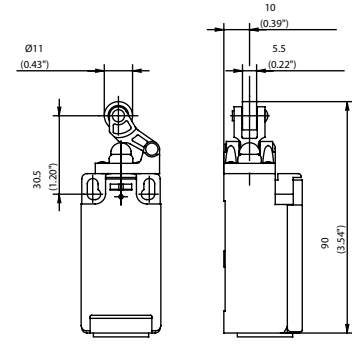
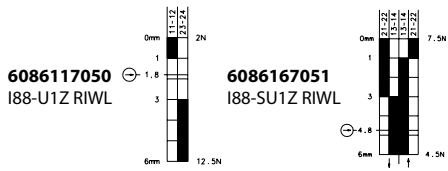
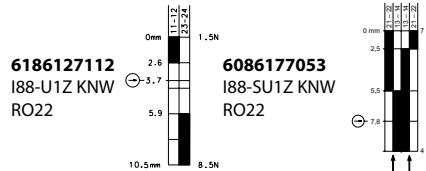
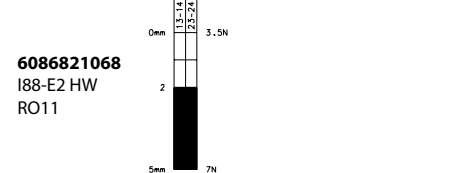
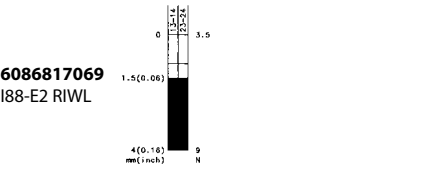
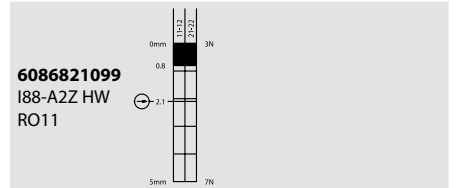
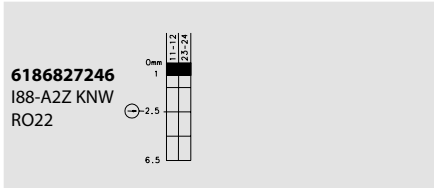
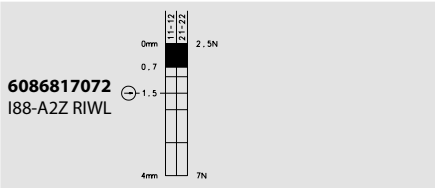
Special features / variants  
(on request)

- Available with black enclosure
- With latching function and following contacts:  
2 NC / 1 NO contact  
1 NC / 2 NO contact
- Both with and without overlap

Special features / variants  
(on request)

- Available with black enclosure
- With latching function
- With steel roller and following contacts:  
2 NC / 1 NO contact  
1 NC / 2 NO contact
- Both with overlap



**RIWL**

**KNW RO22**

**HW RO11 (Form E)**

**Slow-action**
**Snap-action**

**Slow-action**
**Snap-action**

**Slow-action**
**Snap-action**

**Replacement actuator: 3918161673**
**Replacement actuator: 3918252223**
**Replacement actuator: 3918191547**
**Special features / variants**

(on request)

- Available with black enclosure
- With latching function
- Available with different actuating directions
- With steel roller

**Special features / variants**

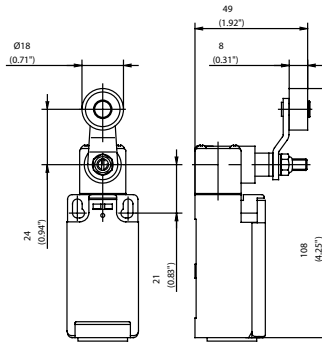
(on request)

**Special features / variants**

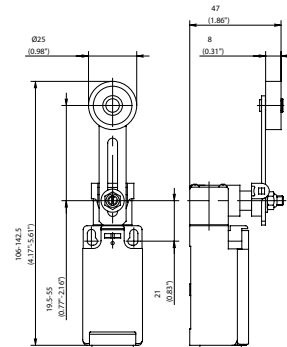
(on request)

- Available with black enclosure
- With steel roller
- Various roller diameters

**AH (Form A)**



**AV**



**Switching operation**

**1 NC / 1 NO contact**

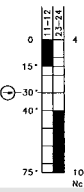
**Slow-action**

**Snap-action**

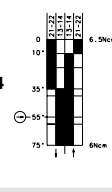
**Slow-action**

**Snap-action**

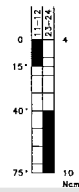
**6086135033**  
I88-U1Z AH



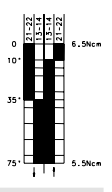
**6086185034**  
I88-SU1Z AH



**6086136037**  
I88-U1 AV



**6086186038**  
I88-SU1 AV

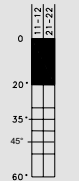


**2 NC contacts**

**6086835059**  
I88-A2Z AH



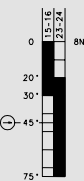
**6086836131**  
I88-A2 AV



**2 NO contacts**

**1 NC / 1 NO contact  
Overlapping**

**6186335628**  
I88-UV1Z AH



**Approvals**



**Replacement actuator: 3918351166**

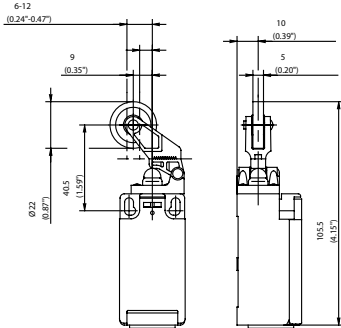
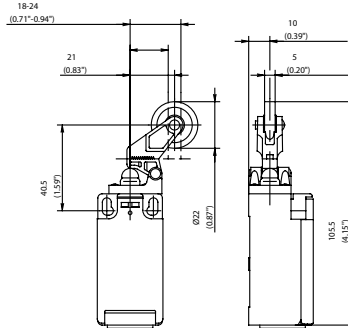
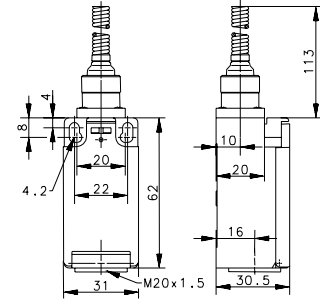
**Replacement actuator: 3918360984**

**Special features / variants**  
(on request)

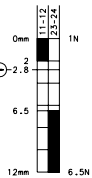
- Available with black enclosure
- Available with different actuating directions
- With steel roller
- Various roller diameters
- Cranked or straight lever
- Various lever lengths

**Special features / variants**  
(on request)

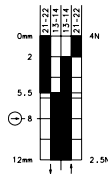
- Available with black enclosure
- Various actuating directions
- Various roller diameters
- Cranked or straight lever
- Various lever lengths
- With roller over switch

**DGHW RO22**

**DGKW RO22**

**FF**

**Slow-action**
**Snap-action**

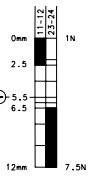
**6086121029**  
I88-U1Z DGHW  
RO22



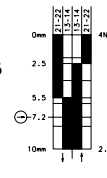
**6086171030**  
I88-SU1Z  
DGHW RO22


**Slow-action**
**Snap-action**

**6086127025**  
I88-U1Z DGKW  
RO22



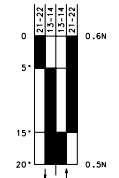
**6086177026**  
I88-SU1Z  
DGKW RO22


**Slow-action**
**Snap-action**

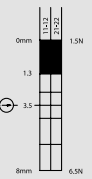
**6186140217**  
I88-U1 FF



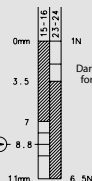
**6086190078**  
I88-SU1 FF



**6086821120**  
I88-A2Z DGHW  
RO22



**6186321244**  
I88-UV1Z  
DGHW RO22



**Replacement actuator: 3918211529**

**Replacement actuator: 3918271528**

**Replacement actuator: 3918401031**

**Special features / variants**

(on request)

- Available with black enclosure
- Available with different actuating directions
- Various roller diameters

**Special features / variants**

(on request)

- With latching function
- Various roller diameters and with following contacts:  
2 NC / 1 NO contact  
1 NC / 2 NO contact  
Both with overlap

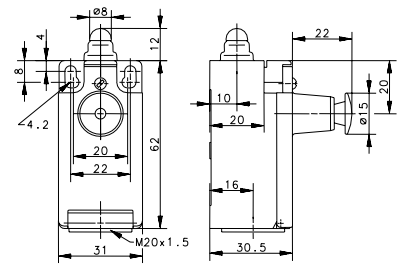
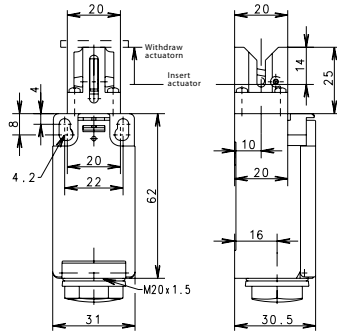
**Special features / variants**

(on request)

- Available with black enclosure
- Various spring lengths
- Different spring versions or spring rod

**KS**

**W RAST**



**Switching operation**

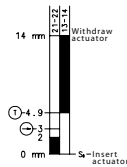
**Slow-action**

**Snap-action**

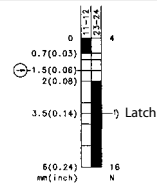
**Slow-action**

1 NC / 1 NO contact

6116819140  
I88-U1Z KS

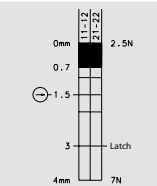


6186103005  
I88-U1Z W  
RAST



2 NC contacts

6186803155  
I88-A2Z W  
RAST



2 NO contacts

1 NC / 1 NO contact  
Overlapping

Approvals



Replacement actuator: -

Replacement actuator: -

Special features / variants  
(on request)

Special features / variants  
(on request)

## SGS

The SGS is a bistable safety switch with remote release facility. Once switched, the SGS remains in this position until it is manually reset at the plunger or via an external button. A built-in solenoid actuator controls the release action. In its rugged plastic housing, it represents an economically priced alternative to the BERNSTEIN GC Series with remote release.

**The SGS can be used wherever an intentional (manual or electrical) reset function is required:**

- In lift construction
- In door and gate systems
- In wind power stations
- Wherever safety is of prime importance

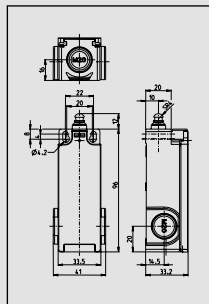
By correspondingly checking the NC contacts with positive opening action, an evaluator circuit is able to disconnect the power supply to a drive controller and shut down the machine.

### SGS applications include

- Lift pre-switching (speed limiter)
- Monitoring of emergency release function
- Machine construction applications where specific reset after operation is required
- Use in areas difficult to access
- Remote monitoring and reset over large distances

### Features:

- Plunger indicates switch status
- Plunger groove for manual reset
- 2 versions: 230 V AC and 24 V DC
- Reset via built-in solenoid actuator
- 3 cable outlets M20 x 1.5
- Switching functions: 2 NC contacts
- TÜV EN 81 approval
- Other actuators from the standard range on request



### Technical data

Electrical data	
Protection class	II, Insulated
<b>Switching elements</b>	
Rated insulation voltage	$U_i$ 250 V AC
Thermal current	$I_{the}$ 10 A
Utilisation category	AC-15, $U_e / I_e$ 240 V / 3 A DC-13, $U_e / I_e$ 250 V / 0.27 A
Minimum switching voltage	24 V
Minimum switching current	5 mA
Positive opening	☉ conforming IEC/EN 60947-5-1, Addendum K
Short-circuit protection	Fuse 4 A gL/gG
<b>Electromagnet</b>	
Without free-wheeling diode	
Thermal class	B (130 °C)
Rated operating voltage	$U_e$ 24 V DC / 230 V AC (depending on type)
Rated operating current	$I_e$ 2.3 A / 0.23 A AC
Duty factor	ED 3 %
Minimum ON time	$T_i$ 0.2 s
Maximum ON time	$T_e$ 0.5 s
Minimum OFF time	$T_p$ 17 s
Mechanical data	
Enclosure	Glass fibre-reinforced thermoplastic, self-extinguishing
Cover	Glass fibre-reinforced thermoplastic, self-extinguishing
Actuation	Plunger (thermoplastic)
Approach speed	$V_{max}$ 0.5 m/s
Ambient temperature	-25 °C bis +50 °C
Contact type	2 NC contacts (Zb) / NC contacts, 1NO contacts (Zb)
Switching principle	Snap action system, bistable
Mechanical service life	5 x 10 <sup>4</sup> switching cycles
B10d	0,1 Mio.
Bolt	2 x M4 / 2 x M5 for safety applications
Type of connection	Switching element Screw connections
Conductor cross sections	Single-wire 0.5 ... 1.5 mm <sup>2</sup>
Type of connection	Electromagnet 2 x butt connector similar to DIN 46341 (crushing zone 0,5 – 1,5 mm <sup>2</sup> )
Cable entry	3x M20x1,5
Installation position	Any
Contact opening	4 x >2 mm
Protection class	IP65 conforming to IEC/EN 60529
Standards	
VDE 0660 T100, DIN EN 60947-1, IEC 60947-1 VDE 0660 T200, DIN EN 60947-5-1, IEC 60947-5-1 DIN EN 81-1	

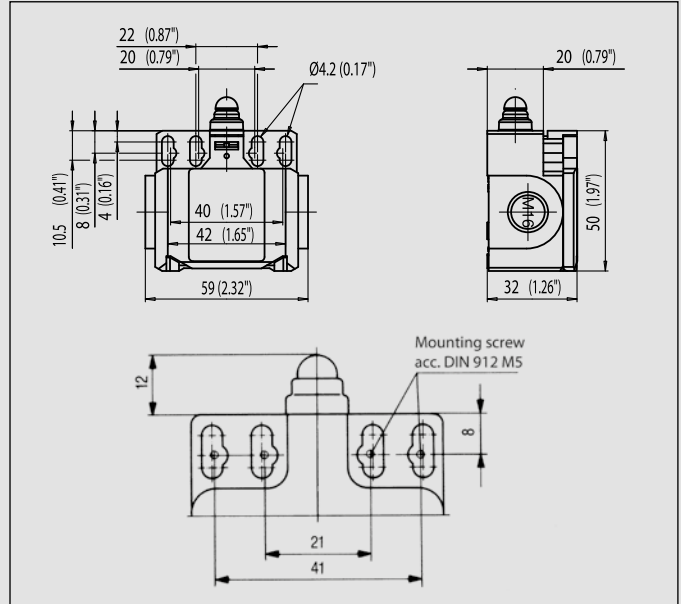
### Product selection

Supply voltage reset 24 Volt				
Switching operation	Actuating force 3 N		Actuating force 6 N	
1NC / 1NO	-	-	-	-
2NC	6010853002	SGS-SA2Z W F3 24 V	6010853001	SGS-SA2Z W F6 24 V

Supply voltage reset 230 Volt				
Switching operation	Actuating force 3 N		Actuating force 6 N	
1NC / 1NO	-	-	6010153027	SGS-SU1Z W F6 230 V
2NC	6010853004	SGS-SA2Z W F3 230 V	6010853003	SGS-SA2Z W F6 230 V

# Insulation-Enclosed Limit Switches

## Bi2



### Recommended use

Thanks to its two cable entries, this switch is ideal for use in series-connected monitoring facilities.

### Product advantages

- Protection class IP 65 to VDE 0470 T1
- Enclosure and cover PA 6, self-extinguishing (UL-94 V0)
- Actuator can be repositioned by 4 x 90°
- Cable entry 2x M16 x 1.5
- Connection designation conforming to DIN EN 50013

### Options

- Available with M12 connector
- AS interface variants available
- Preassembled with customer-specific cables and connectors on request

### Design layout

- Slow-action and snap-action contacts
- Versions: 1 NC / 1NO, 2 NC
- All NC contacts with ⊕ in the circuit diagram are positively opening contacts
- Type: Zb (galvanically isolated changeover contact)9

### Mounting

- Two M4 adjustment slots (distance between centres 22 mm)
- Two M4 adjustment slots (distance between centres 42 mm)
- Two M5 holes (distance between centre 21 mm) for safety applications
- Two M5 holes (distance between centre 41 mm) for safety applications without additional securing element
- Front mounting

### Installation advantages

- Cover opening range 135° (cover can also be detached from hinge)
- Screw connections with self-lifting clamping plates
- Easy-action cover lock (close and press)
- Cover additionally secured with screw
- 2 cable entries for through-wiring

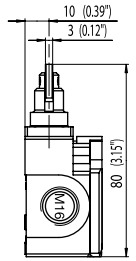
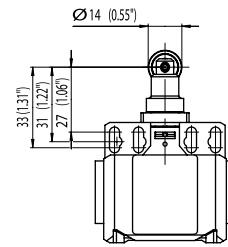
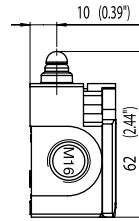
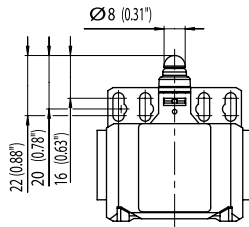
### Technical data

Electrical data		
Rated insulation voltage	U <sub>i</sub> max.	400 V AC
Conventional thermal current <sup>①</sup>	I <sub>the</sub>	10 A
Rated operating voltage	U <sub>e</sub> max.	240 V AC
Utilisation category		AC15, U <sub>e</sub> /I <sub>e</sub> 240 V/3 A
Short-circuit protection (up to) <sup>①</sup>		Fuse 10 A gL/gG
Protection class		II, Insulated
Mechanical data		
Enclosure material		Thermoplastic, glass fibre-reinforced
Ambient temperature		-30 °C to +80 °C
Mechanical service life (up to) <sup>①</sup>		10 x 10 <sup>6</sup> switching cycles
B10d (up to) <sup>①</sup>		20 Mio.
Switching frequency		≤ 100/min.
Type of connection		Screw connections
Conductor cross sections		Single-wire 0.5 – 1.5 mm <sup>2</sup> or Stranded wire with ferrule 0.5 – 1.5 mm <sup>2</sup>
Cable entry		2 x M16 x 1,5
Protection class		IP 65 conforming to EN 60529; DIN VDE 0470 T1
Standards		
VDE 0660 T100, DIN EN 60947-1, IEC 60947-1		
VDE 0660 T200, DIN EN 60947-5-1, IEC 60947-5-1		

① Depending on switching system. See Table on Pages 70 – 73.

W

RIW



Switching operation

Slow-action

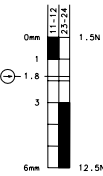
Snap-action

Slow-action

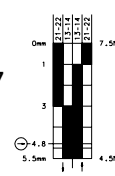
Snap-action

1 NC / 1 NO contact

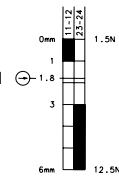
6085103100  
BI2-U1Z W



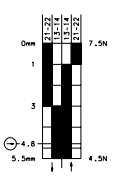
6085153107  
BI2-SU1Z W



6085117101  
BI2-U1Z RIW

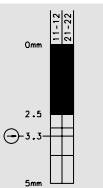


6085167108  
BI2-SU1Z RIW



2 NC contacts

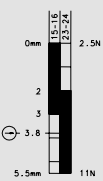
6085803116  
BI2-A2Z W



2 NO contacts

1 NC / 1 NO contact  
Overlapping

6085303115  
BI2-UV1Z W



Approvals



Replacement actuator: -

Replacement actuator: -

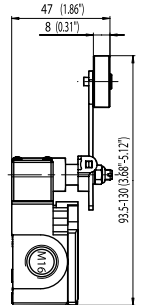
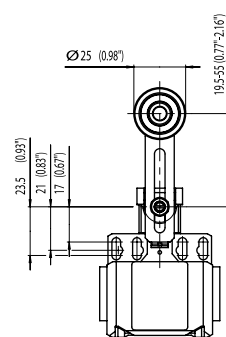
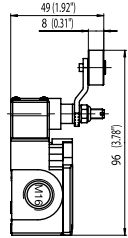
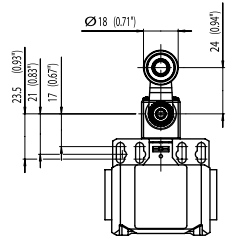
Special features / variants  
(on request)

Special features / variants  
(on request)

- With steel roller

**AH**

**AV**



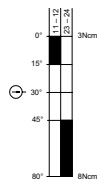
**Switching operation**

**Slow-action      Snap-action**

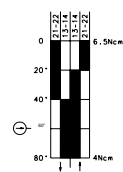
**Slow-action      Snap-action**

1 NC / 1 NO contact

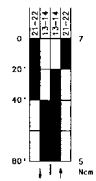
6085135104  
BI2-U1Z AH



6085185111  
BI2-SU1Z AH



6085186112  
BI2-SU1 AV



2 NC contacts

2 NO contacts

1 NC / 1 NO contact  
Overlapping

Approvals



Replacement actuator: 3918351166

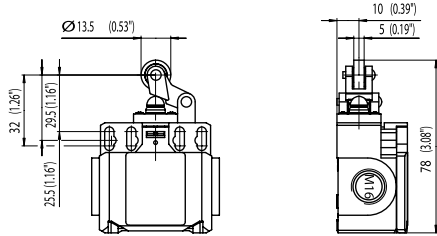
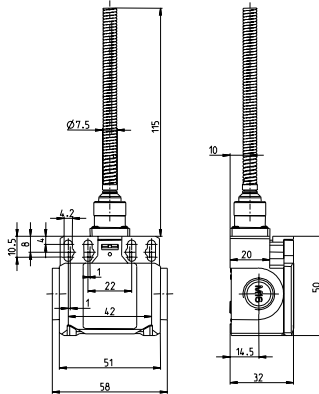
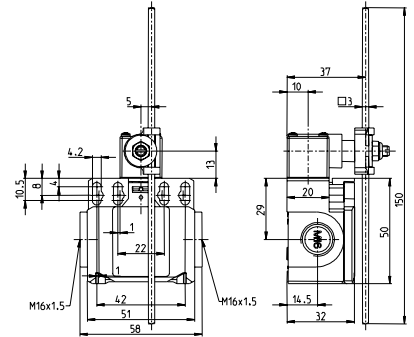
Replacement actuator: 3918360984

**Special features / variants**  
(on request)

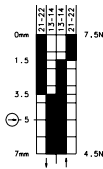
- Available with different actuating directions
- With steel roller
- Various roller diameters
- Cranked or straight lever
- Various lever lengths

**Special features / variants**  
(on request)



**HW RO13.5**

**FF**

**AD**

**Slow-action**
**Snap-action**

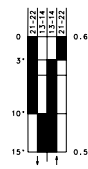
**6085171109**  
B12-SU1Z HW  
RO13.5


**Slow-action**
**Snap-action**

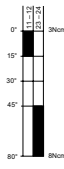
**6185140104**  
B12-U1 FF



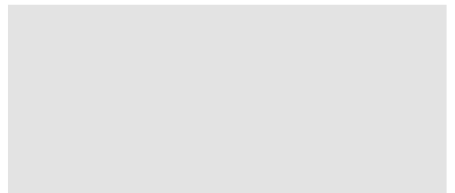
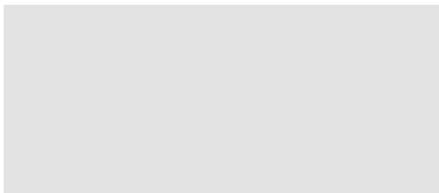
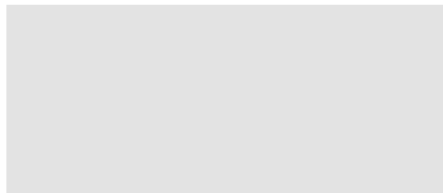
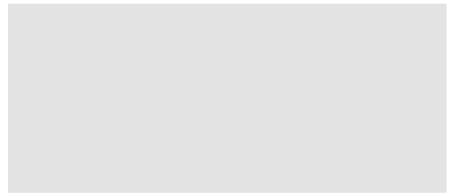
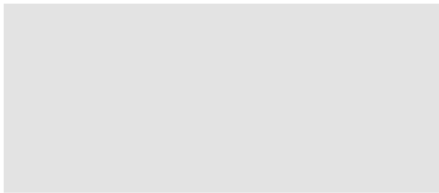
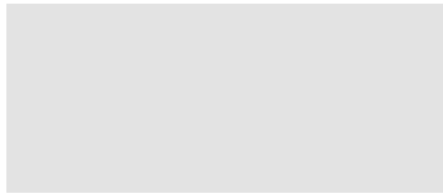
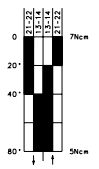
**6085190114**  
B12-SU1 FF


**Slow-action**
**Snap-action**

**6085137106**  
B12-U1 AD



**6085187113**  
B12-SU1 AD



Replacement actuator: 3918190681

Replacement actuator: 3918401031

Replacement actuator: 3918370986

**Special features / variants**  
(on request)

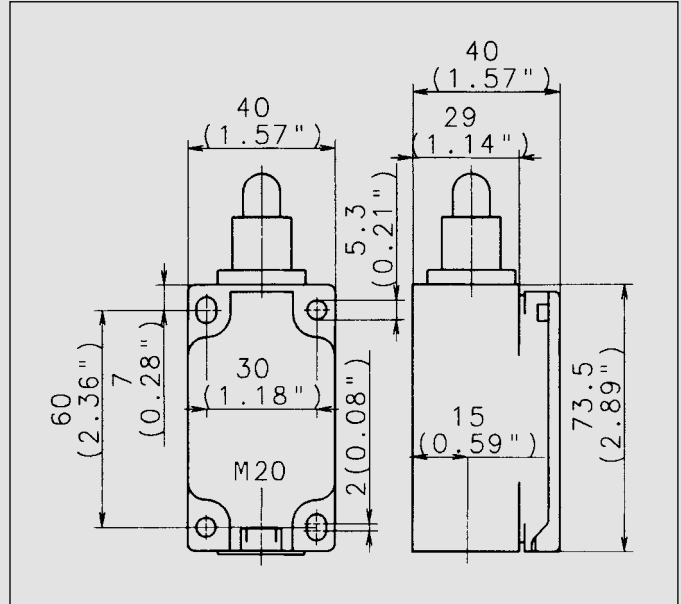
**Special features / variants**  
(on request)

- Available with different spring lengths
- Spring rod
- Various spring versions

**Special features / variants**  
(on request)

# Insulation-Enclosed Limit Switches

## ENK



### Recommended use

Thanks to its design and its metal actuator, the ENK limit switch is particularly suitable for applications requiring a sturdy safety switch made of plastic.

### Product advantages

- Standard switch conforming to DIN EN 50041
- Standard actuator conforming to DIN EN 50041 (see page 16)
- Protection class IP 65 to VDE 0470 T1
- Enclosure and cover PA 6, (UL-94-V0)
- Actuator can be repositioned by 4 x 90°
- Cable entry M20 x 1.5
- Connection designation conforming to DIN EN 50013
- Metal actuators for high loads

### Options

- Available with M12 connector
- AS interface variants available
- Preassembled with customer-specific cables and connectors on request

### Design layout

- Slow-action and snap-action contacts
- Versions: 1 NC / 1NO, 2 NC, 3 NC, overlapping contacts
- Latching function on request
- All NC contacts with  $\ominus$  in the circuit diagram are positively opening contacts
- Type: Zb (galvanically isolated changeover contact)

### Mounting

- 2 adjustment slots for M5 screws
- 2 holes for M5 mounting screws in safety applications

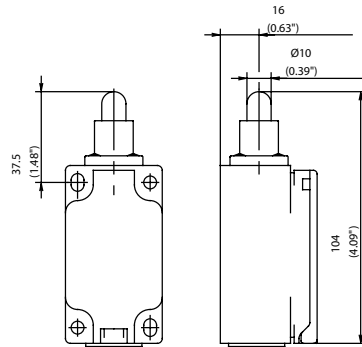
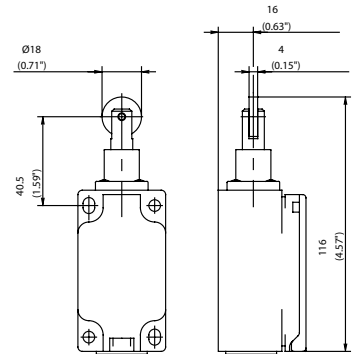
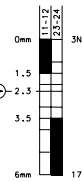
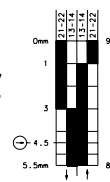
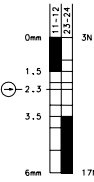
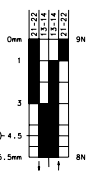
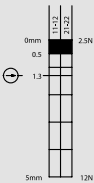
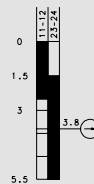
### Installation advantages

- Snap-on cover can be released with screwdriver
- Cover opening range 150° (cover can also be detached from hinge)
- Cover protects switching element during installation
- Screw connections with self-lifting clamping plates
- Easy-action cover lock (close and press)

### Technical data

Electrical data		
Rated insulation voltage	U <sub>i</sub> max.	400 V AC
Conventional thermal current (up to) <sup>①</sup>	I <sub>th</sub>	10 A
Rated operating voltage	U <sub>e</sub> max.	240 V
Utilisation category		AC-15, U <sub>e</sub> /I <sub>e</sub> 240 V/3 A
Short-circuit protection (up to) <sup>①</sup>		Fuse 10 A gL/gG
Protection class		II, Insulated
Mechanical data		
Enclosure material		Thermoplastic, glass fibre-reinforced
Ambient temperature		-30 °C to +80 °C
Mechanical service life (up to) <sup>①</sup>		10 x 10 <sup>6</sup> switching cycles
B10d (up to) <sup>①</sup>		20 Mio.
Switching frequency		≤ 100/min.
Type of connection		Screw connections
Conductor cross sections		Single-wire 0.5 – 1.5 mm <sup>2</sup> or Stranded wire with ferrule 0.5 – 1.5 mm <sup>2</sup>
Cable entry		1 x M20 x 1.5 ≈ 0.15 kg
Protection class		IP 65 onforming to EN 60529; DIN VDE 0470 T1
Standards		
VDE 0660 T100, DIN EN 60947-1, IEC 60947-1		
VDE 0660 T200, DIN EN 60947-5-1, IEC 60947-5-1		

① Depending on switching system. See Table on Pages 70 – 73.

**IW (Form B)**

**RIW (Form C)**

**Switching operation**
**Slow-action**
**Snap-action**
**Slow-action**
**Snap-action**
**1 NC / 1 NO contact**
**6081102001**  
ENK-U1Z IW

**6081152007**  
ENK-SU1Z IW

**6081117002**  
ENK-U1Z RIW

**6081167008**  
ENK-SU1Z RIW

**2 NC contacts**
**6081817281**  
ENK-A2Z RIW

**2 NO contacts**
**1 NC / 1 NO contact  
Overlapping**
**6081317307**  
ENK-UV1Z RIW

**Approvals**

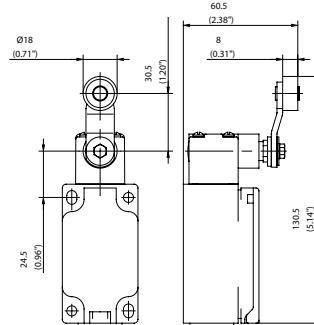
**Replacement actuator: 3918020660**
**Replacement actuator: 3918170661**
**Special features / variants**  
(on request)

- Available with black enclosure and following contacts:  
3 NC contacts

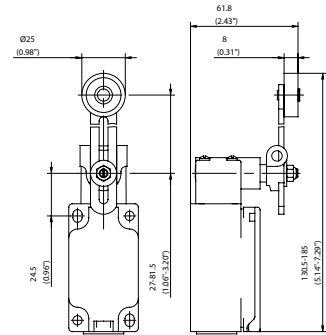
**Special features / variants**  
(on request)

- Available for high temperature range and following contacts:  
3 NC contacts

## AHS-V (Form A)



## AV



### Switching operation

1 NC / 1 NO contact

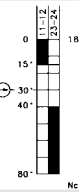
### Slow-action

### Snap-action

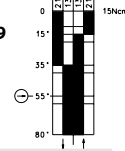
### Slow-action

### Snap-action

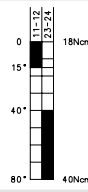
**6081135003**  
ENK-U1Z AHS-V



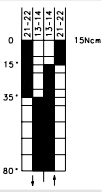
**6081185009**  
ENK-SU1Z  
AHS-V



**6081136012**  
ENK-U1 AV

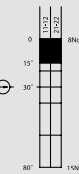


**6081186018**  
ENK-SU1 AV



2 NC contacts

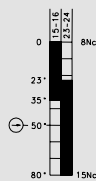
**6081835323**  
ENK-A2Z AHS-V



2 NO contacts

1 NC / 1 NO contact  
Overlapping

**6081335006**  
ENK-UV1Z  
AHS-V



### Approvals



Replacement actuator: 3918350737

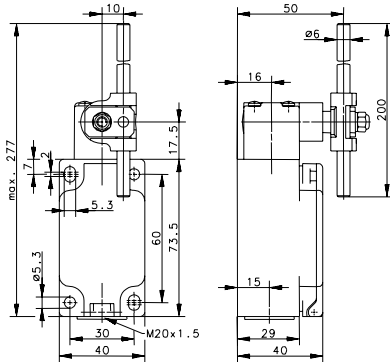
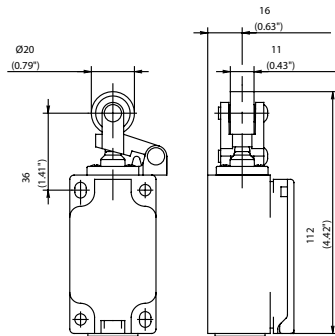
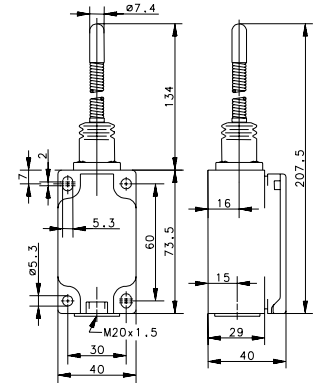
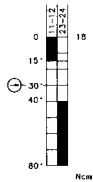
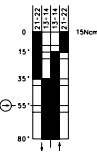
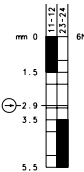
Replacement actuator: 3918360738

### Special features / variants (on request)

- Available with black enclosure
- With 50 mm diameter rubber roller and following contacts: 3 NC contacts

### Special features / variants (on request)

- Available with different lever lengths and roller diameters
- With 50 mm diameter rubber roller
- With roller over switch

**AD (Form D)**

**HW RO20**

**FF**

**Slow-action**
**Snap-action**
**6081137011**  
ENK-U1 AD

**6081187017**  
ENK-SU1 AD

**Slow-action**
**Snap-action**
**6081121095**  
ENK-U1Z HW  
RO20

**6081171096**  
ENK-SU1Z HW  
RO20

**Slow-action**
**Snap-action**
**6081190045**  
ENK-SU1 FF

**Replacement actuator: 3918370739**

**Replacement actuator: 3918200906**

**Replacement actuator: 3918400662**
**Special features / variants**

(on request)

- Available with various actuator directions and actuator lengths

**Special features / variants**

(on request)

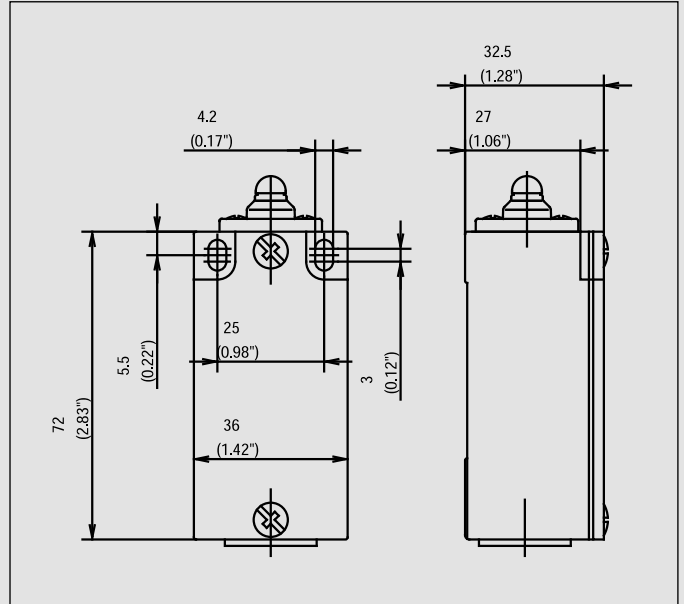
- Available with black enclosure and various roller diameters

**Special features / variants**

(on request)

# Metal-Enclosed Limit Switches

## GC



### Recommended use

Thanks to its compact design, this metal-enclosed switch is ideally suited for virtually all safety and position monitoring applications.

### Product advantages

- Protection class IP 65 to VDE 0470 T1
- Enclosure: Aluminium pressure die-casting
- Cover: Sheet aluminium
- Actuator can be repositioned by 4 x 90°
- Cable entry M20 x 1.5
- Connection designation conforming to DIN EN 50013
- Metal actuators for high loads
- Graduated adjustment of AH lever
- Selectable direction-dependent contact-making of AH actuator (basic setting: contact-making both sides)

### Options

- AS interface versions on request
- Preassembled with customer-specific cables and connectors on request

### Design layout

- Slow-action and snap-action contacts
- Versions: 1 NC / 1NO, 2 NC / 2 NO, 2 NC, overlapping contacts
- All NC contacts with ⊕ in the circuit diagram are positively opening contacts
- Type: Zb (galvanically isolated changeover contact)
- Latching function on request

### Mounting

- 2 adjustment slots for M4 screws (for safety applications with blind hole for  $\varnothing$  4.0 mm fitted pin in enclosure base or enclosure with holes for M5)

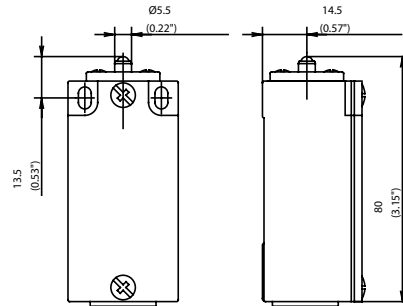
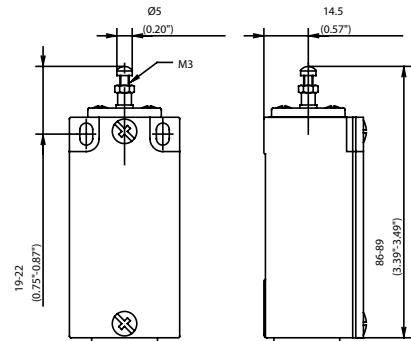
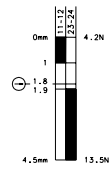
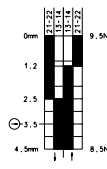
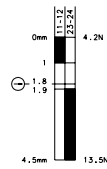
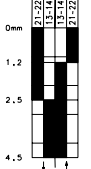
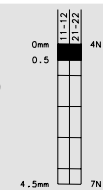
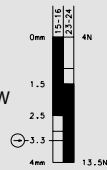
### Installation advantages

- Screw connections with self-lifting clamping plates
- Captive cover screws
- Easy-to-change switching system thanks to snap-in retainer
- Finely adjustable switching point with adjusting screw

### Technical data

Electrical data	
Rated insulation voltage (up to) <sup>①</sup>	U <sub>i</sub> max. 400 V AC
Conventional thermal current (up to) <sup>①</sup>	I <sub>the</sub> 10 A
Rated operating voltage	U <sub>e</sub> max. 240 V
Utilization category (up to) <sup>①</sup>	AC-15, U <sub>e</sub> /I <sub>e</sub> 240 V/3 A
Short-circuit protection (up to) <sup>①</sup>	Fuse 10 A gL/gG
Protection class	I
Mechanical data	
Enclosure material	Aluminium pressure die-casting
Ambient temperature	-30 °C to + 80 °C
Mechanical service life (up to) <sup>①</sup>	10 x 10 <sup>6</sup> switching cycles
B10d (up to) <sup>①</sup>	20 Mill.
Switching frequency	≤ 100/min.
Type of connection	Screw connections
Conductor cross sections	Single-wire 0.5 – 1.5 mm <sup>2</sup> or Stranded wire with ferrule 0.5 – 1.5 mm <sup>2</sup>
Cable entry	1 x M20 x 1.5
Protection class	IP 65 conforming to IEC/EN 60529
Standards	
VDE 0660 T100, DIN EN 60947-1, IEC 60947-1 VDE 0660 T200, DIN EN 60947-5-1, IEC 60947-5-1	

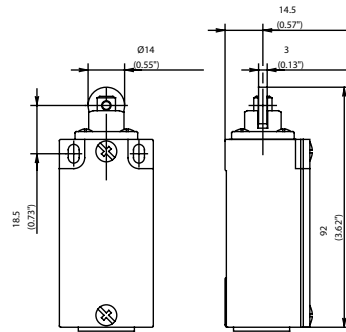
<sup>①</sup> Depending on switching system. See Table on Pages 70 – 73.

**IW**

**STIW**

**Switching operation**
**1 NC / 1 NO contact**
**Slow-action**
**Snap-action**
**6021102001**  
GC-U1Z IW

**6021352620**  
GC-SU1Z IW

**Slow-action**
**Snap-action**
**6021105015**  
GC-U1Z STIW

**6021155017**  
GC-SU1Z STIW

**2 NC contacts**
**6021802189**  
GC-A2Z IW

**2 NO contacts**
**1 NC / 1 NO contact  
Overlapping**
**6021305016**  
GC-UV1Z STIW

**Approvals**

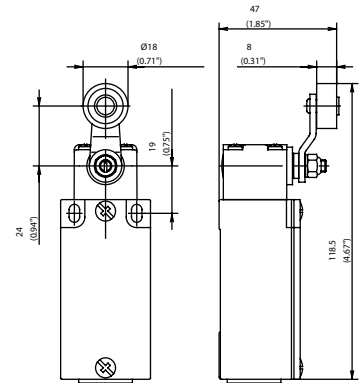
**Replacement actuator: 3912030546**
**Replacement actuator: 3912050523**
**Special features / variants**  
(on request)

- Special features / variants**
- Actuator length adjustable with adjusting screw

RIW



AH



Switching operation

Slow-action

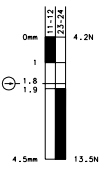
Snap-action

Slow-action

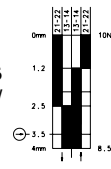
Snap-action

1 NC / 1 NO contact

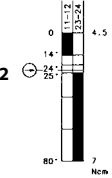
6021117029  
GC-U1Z RIW



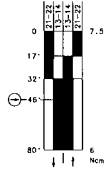
6021367626  
GC-SU1Z RIW



6021135102  
GC-U1Z AH

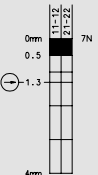


6021385634  
GC-SU1Z AH



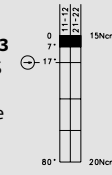
2 NC contacts

6021817172  
GC-A2Z RIW



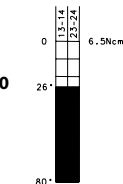
6121835833  
GC-A2Z AHS

See separate datasheet



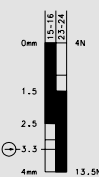
2 NO contacts

6021835160  
GC-E2 AH

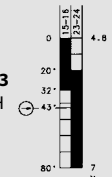


1 NC / 1 NO contact  
Overlapping

6021317030  
GC-UV1Z RIW



6021335133  
GC-UV1Z AH



Approvals



Replacement actuator: 3912170518

Replacement actuator: 3912350722

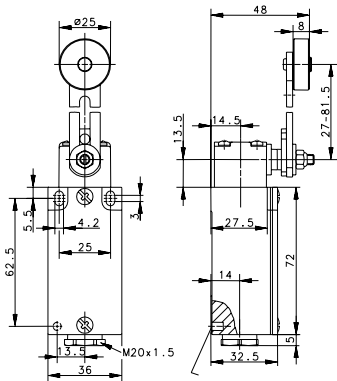
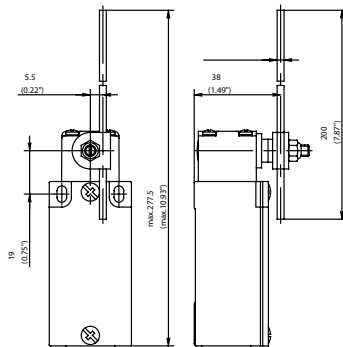
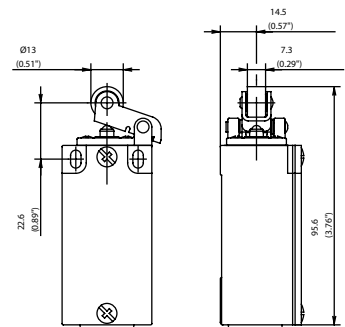
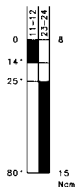
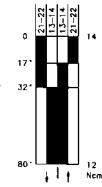
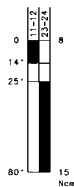
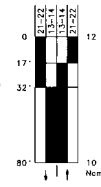
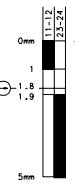
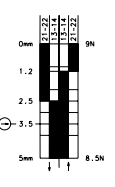
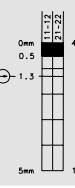
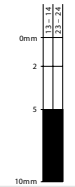
Special features / variants  
(on request)

- Available for high temperature range and following contacts:
  - 2 NC / 1 NO contact
  - 2 NC / 2 NO contact (larger enclosure)

Special features / variants  
(on request)

- Available with various roller diameters, cranked or straight lever and with various lever lengths
- With roller over switch and with following contacts:
  - 2 NC / 2 NO contact (larger enclosure)



**AV**

**AD**

**HIW**

**Slow-action**
**Snap-action**
**6021136104**  
GC-U1 AV

**6021186118**  
GC-SU1 AV

**Slow-action**
**Snap-action**
**6021137103**  
GC-U1 AD

**6021187125**  
GC-SU1 AD

**Slow-action**
**Snap-action**
**6021120057**  
GC-U1Z HIW

**6021370629**  
GC-SU1Z HIW

**6021820175**  
GC-A2Z HIW

**6021820157**  
GC-E2 HIW

**6021320058**  
GC-UV1Z HIW

**Replacement actuator: 3912360723**
**Replacement actuator: 3912370724**
**Replacement actuator: 3912200552**
**Special features / variants**  
(on request)

- Various roller diameters
- Different lever lengths
- With roller over switch and with following contacts:  
2 NC / 2 NO contact

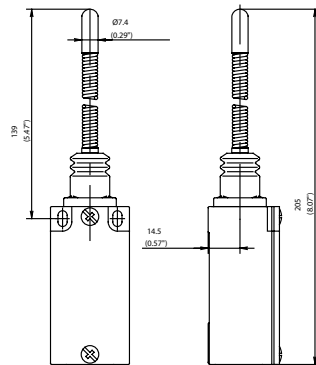
**Special features / variants**  
(on request)

- Available with various actuator lengths and actuator directions
- With following contacts:  
2 NC / 1 NO with overlap  
(larger enclosure)

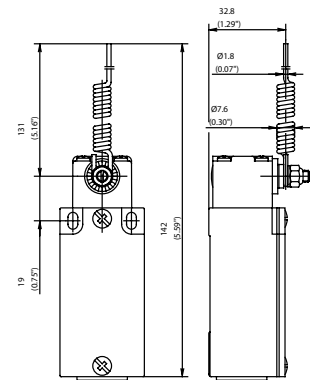
**Special features / variants**  
(on request)

- Available with different actuating directions
- Available with steel roller
- With following contacts:  
2 NC / 2 NO contact  
1 NC / 2 NO with overlap  
(larger enclosure)

FF



AF



Switching operation

1 NC / 1 NO contact

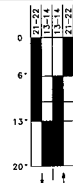
Slow-action

Snap-action

6021140476  
GC-U1 FF



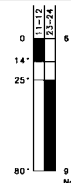
6021190100  
GC-SU1 FF



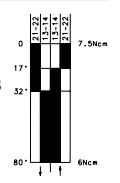
Slow-action

Snap-action

6021139106  
GC-U1 AF



6021189128  
GC-SU1 AF



2 NC contacts

2 NO contacts

1 NC / 1 NO contact  
Overlapping

Approvals



Replacement actuator: 3912400510

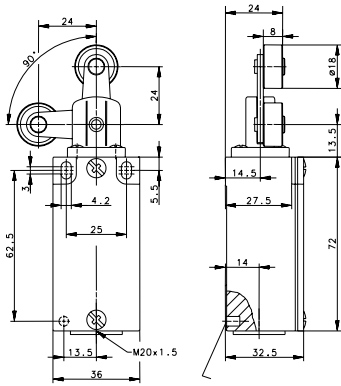
Replacement actuator: 3912390725

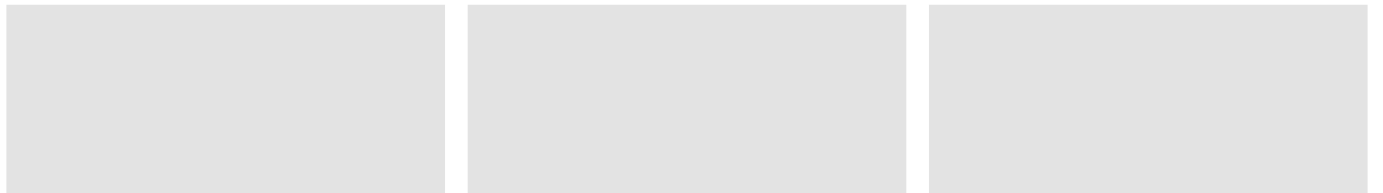
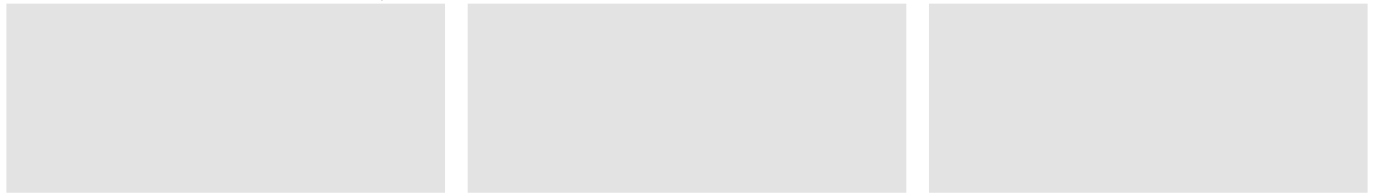
Special features / variants  
(on request)

- Different spring lengths
- Different spring versions or spring rod

Special features / variants  
(on request)

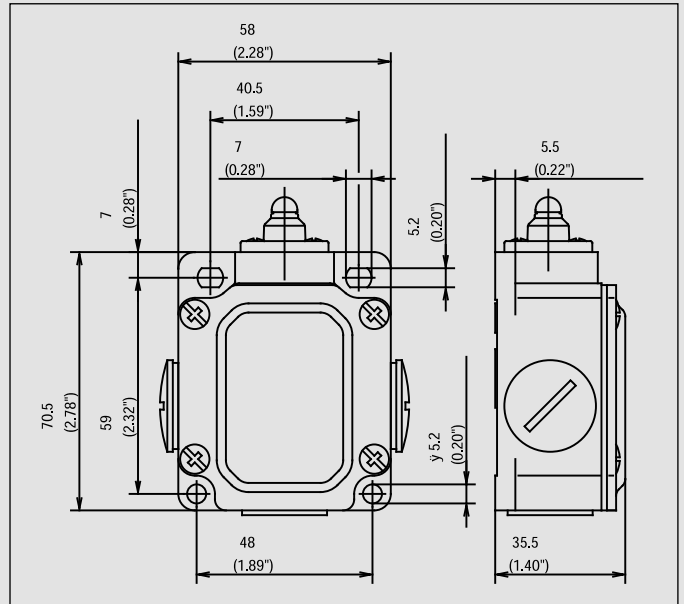
- Available with various actuator lengths and actuator directions

**DR**

**Slow-action**
**Snap-action**

**6021191099**  
**GC-SU1Z DR**

**Replacement actuator: 3912410593**
**Special features / variants**  
 (on request)

# Metal-Enclosed Limit Switches

## SN2



### Recommended use

With its three cable entries and spacious connection area, the SN2 limit switch is the optimum solution for through-wiring or even branching off electrical circuits.

### Product advantages

- Protection class IP 65 to VDE 0470 T1
- Enclosure: Aluminium pressure die-casting
- Cover: Sheet aluminium
- Actuator can be repositioned by 4 x 90°
- Cable entry 3x M20 x 1.5
- Connection designation conforming to DIN EN 50013
- Metal actuators for high loads
- Graduated adjustment of AH lever
- Selectable direction-dependent contact-making of AH actuator (basic setting: contact-making both sides)

### Options

- AS interface versions on request
- Preassembled with customer-specific cables and connectors on request

### Design layout

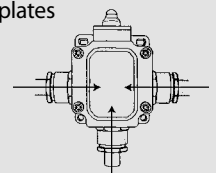
- Slow-action and snap-action contacts
- Versions: 1 NC / 1NO, 2 NC
- All NC contacts with  $\ominus$  in the circuit diagram are positively opening contacts
- Type: Zb (galvanically isolated changeover contact)
- Latching function on request

### Mounting

- 2 adjustment slots for M5 screws
- 2 addition holes for M5 mounting screws in safety applications

### Installation advantages

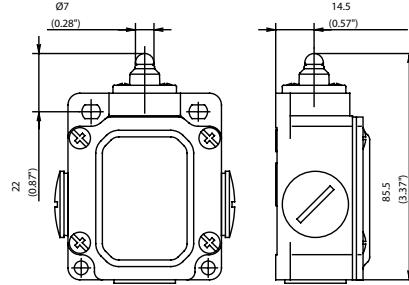
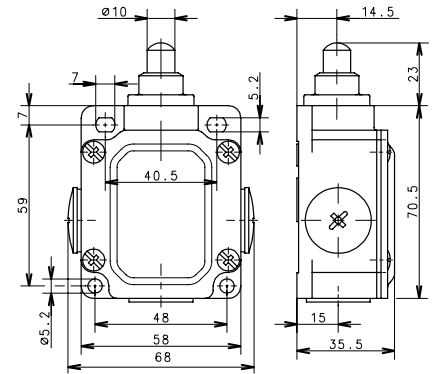
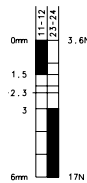
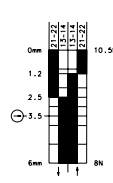
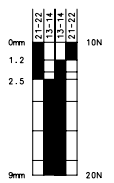
- 3 cable entries for through-wiring
- Generously dimensioned connection space
- Screw connections with self-lifting clamping plates
- Easy-to-change switching system thanks to snap-in retainer
- Finely adjustable switching point with adjusting screw



### Technical data

Electrical data		
Rated insulation voltage	$U_i$ max.	400 V AC
Conventional thermal current	$I_{the}$	10 A
Rated operating voltage	$U_e$ max.	240 V
Utilization category		AC-15, A300, $U_e/I_e$ 240 V/3 A
Short-circuit protection (up to) <sup>①</sup>		Fuse 10 A gL/gG
Protection class		I
Mechanical data		
Enclosure material		Aluminium pressure die-casting
Ambient temperature		-30 °C to + 80 °C
Mechanical service life		10 x 10 <sup>6</sup> switching cycles
B10d (up to) <sup>①</sup>		20 Mill.
Switching frequency		max. 100/min.
Type of connection		Screw connections
Conductor cross sections		Single-wire 0.5 – 1.5 mm <sup>2</sup> or Stranded wire with ferrule 0.5 – 1.5 mm <sup>2</sup>
Cable entry		3 x M20 x 1.5
Protection class		IP 65 conforming to EN 60529, DIN VDE 0470 T1
Standards		
conforming to EN 60947-1; EN 60947-5-1		

<sup>①</sup> Depending on switching system. See Table on Pages 70 – 73.

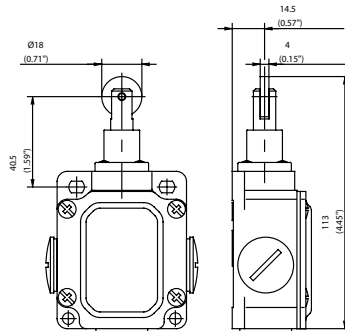
**W**

**LIW**

**Switching operation**
**1 NC / 1 NO contact**
**Slow-action**
**6033103023**  
SN2-U1Z W

**Snap-action**
**6033353016**  
SN2-SU1Z W

**Slow-action**
**Snap-action**
**6033194022**  
SN2-SU1 LIW

**2 NC contacts**
**2 NO contacts**
**1 NC / 1 NO contact  
Overlapping**
**Approvals**

**Replacement actuator: 3913030537**
**Replacement actuator: 3912440536**
**Special features / variants**  
(on request)

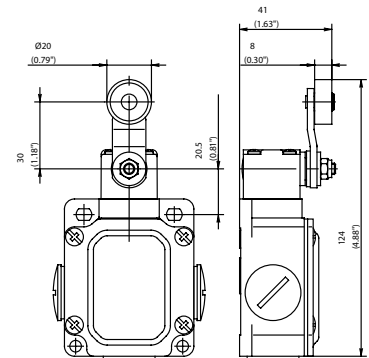
**Special features / variants**

- Telescopic plunger, particularly long actuation travel of 9 mm

## RIW



## AHS



### Switching operation

1 NC / 1 NO contact

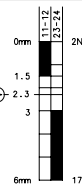
### Slow-action

### Snap-action

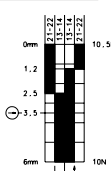
### Slow-action

### Snap-action

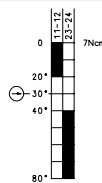
6033117025  
SN2-U1Z RIW



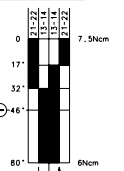
6033367017  
SN2-SU1Z RIW



6033135002  
SN2-U1Z AHS



6033385018  
SN2-SU1Z AHS



2 NC contacts

2 NO contacts

1 NC / 1 NO contact  
Overlapping

Approvals



Replacement actuator: 3918170587

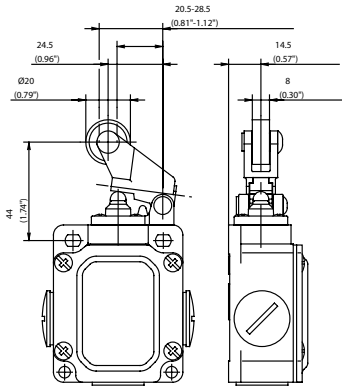
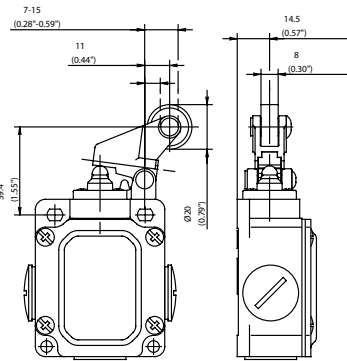
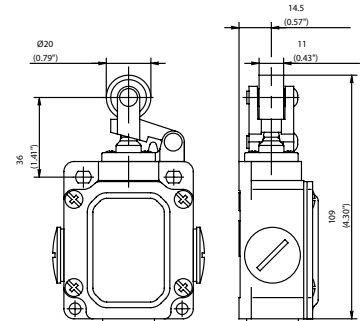
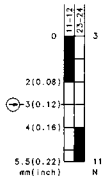
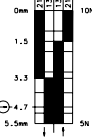
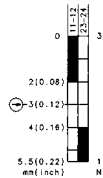
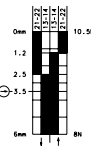
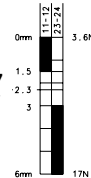
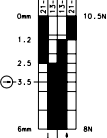
Replacement actuator: 3913351913

**Special features / variants**  
(on request)

- Available with different actuating directions
- With latching function

**Special features / variants**  
(on request)

- Available with different actuating directions

**DGHW**

**DGKW**

**HW**

**Slow-action**
**Snap-action**
**6033121005**  
 SN2-U1Z  
 DGHW

**6033371004**  
 SN2-SU1Z  
 DGHW

**Slow-action**
**Snap-action**
**6033127010**  
 SN2-U1Z  
 DGKW

**6033377011**  
 SN2-SU1Z  
 DGKW

**Slow-action**
**Snap-action**
**6033121007**  
 SN2-U1Z HW

**6033371006**  
 SN2-SU1Z HW

**Replacement actuator: 3918211656**
**Special features / variants**  
 (on request)

- Available with different actuating directions

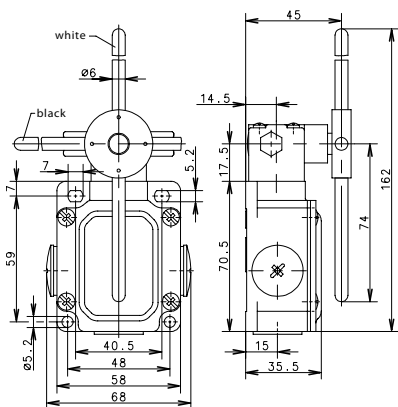

**Replacement actuator: 3918271655**
**Special features / variants**  
 (on request)

- Available with different actuating directions


**Replacement actuator: 3913210553**
**Special features / variants**  
 (on request)

- Available with different actuating directions

AD4K



Switching operation

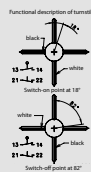
Slow-action

Snap-action

1 NC / 1 NO contact

2 NC contacts

6133887022  
SN2-SA2Z  
AD4K



2 NO contacts

1 NC / 1 NO contact  
Overlapping

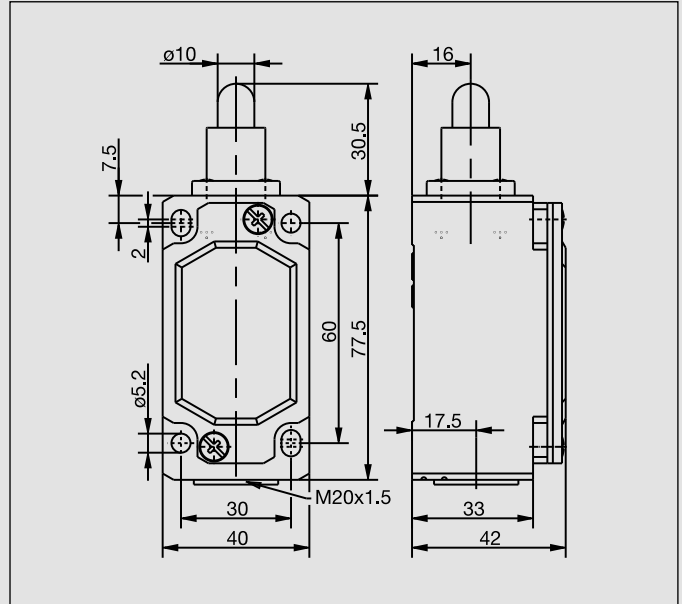
Approvals

Replacement actuator: 3913371712  
without screws,  
without seals  
3992000042  
accessory bag  
(40 screws,  
10 seals)

Special features / variants  
(on request)



## ENM2



### Recommended use

With its standard enclosure, the ENM2 limit switch can be used universally in all industrial and safety applications.

### Product advantages

- Standard switch conforming to DIN EN 50041
- Standard actuator conforming to DIN EN 50041 (see page 16)
- Protection class IP 65 to VDE 0470 T1
- Enclosure: Aluminium pressure die-casting
- Cover: Sheet aluminium
- Actuator can be repositioned by  $4 \times 90^\circ$
- Cable entry M20 x 1.5
- Connection designation conforming to DIN EN 50013
- Metal actuators for high loads

### Options

- AS interface versions on request
- Preassembled with customer-specific cables and connectors on request

### Design layout

- Slow-action and snap-action contacts
- Versions: 1 NC / 1NO, 2 NC, overlapping contacts
- All NC contacts with  $\oplus$  in the circuit diagram are positively opening contacts
- Type: Zb (galvanically isolated changeover contact)

### Mounting

- Two M5 adjustment screws with slots
- Two M5 screws for safety applications without additional securing element

### Installation advantages

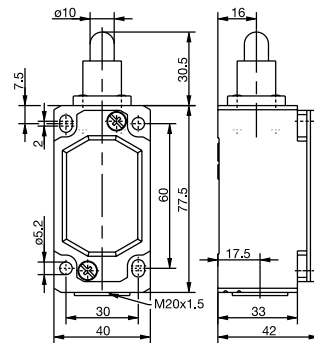
- Screw connections with self-lifting clamping plates
- Easy-to-change switching system thanks to snap-in retainer (depending on type)
- Finely adjustable switching point with adjusting screw
- Captive cover screws
- Enlarged connection space
- Earthing surface on same level as switching system

### Technical data

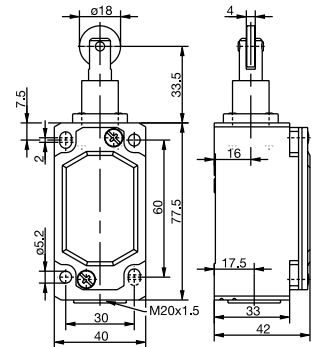
Electrical data	
Rated insulation voltage (up to) <sup>①</sup>	$U_i$ max. 400 V AC
Conventional thermal current (up to) <sup>①</sup>	$I_{the}$ 10 A
Rated operating voltage	$U_e$ max. 240 V
Utilization category (up to) <sup>①</sup>	A300, AC-15, $U_e/I_e$ 240 V/3 A
Short-circuit protection (up to) <sup>①</sup>	Fuse 10 A gL/gG
Protection class	I
Mechanical data	
Enclosure material	Aluminium pressure die-casting
Ambient temperature	-30 °C to + 80 °C
Mechanical service life (up to) <sup>①</sup>	$10 \times 10^6$ switching cycles
B10d (up to) <sup>①</sup>	20 Mill.
Switching frequency	$\leq 100/\text{min.}$
Type of connection	Screw connections
Conductor cross sections	Single-wire 0.5 – 1.5 mm <sup>2</sup> or Stranded wire with ferrule 0.5 – 1.5 mm <sup>2</sup>
Cable entry	1 x M20 x 1.5
Protection class	IP 65 conforming to IEC/EN 60529
Standards	
VDE 0660 T100, DIN EN 60947-1, IEC 60947-1	
VDE 0660 T200, DIN EN 60947-5-1, IEC 60947-5-1	

<sup>①</sup> Depending on switching system. See Table on Pages 70 – 73.

## IW (Form B)



## RIW (Form C)



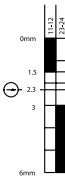
### Switching operation

#### 1 NC / 1 NO contact

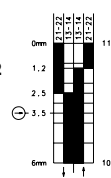
#### Slow-action

#### Snap-action

**6087102001**  
ENM2-U1Z IW



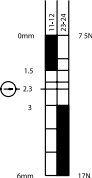
**6087352002**  
ENM2-SU1Z  
IW



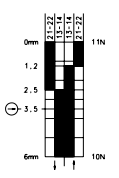
#### Slow-action

#### Snap-action

**6087117004**  
ENM2-U1Z  
RIW



**6087367005**  
ENM2-SU1Z  
RIW

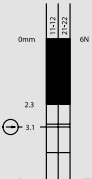


#### 2 NC contacts

**6087802003**  
ENM2-A2Z IW



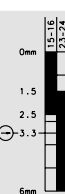
**6087817006**  
ENM2-A2Z  
RIW



#### 2 NO contacts

#### 1 NC / 1 NO contact Overlapping

**6087302027**  
ENM2-UV1Z  
IW



### Approvals



Replacement actuator: 3918020584

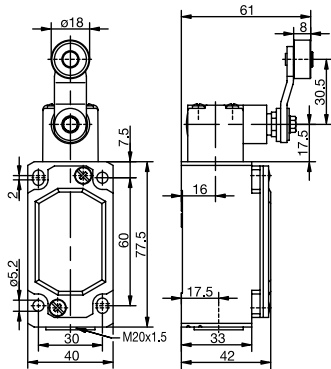
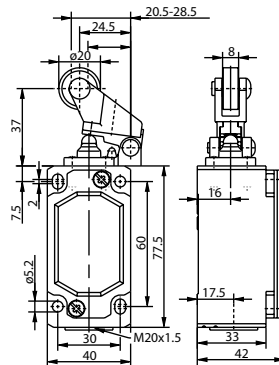
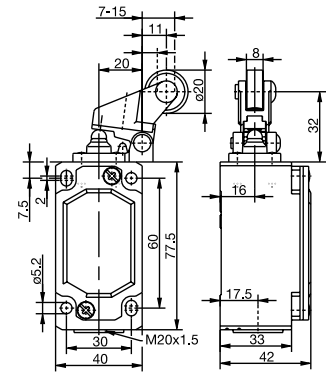
Replacement actuator: 3918170587

### Special features / variants (on request)

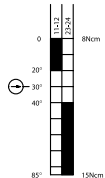
- Also available with following contacts:  
2 NC / 1 NO with overlap  
1 NC / 2 NO with overlap

### Special features / variants (on request)

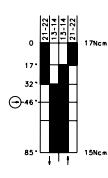
- Available with different actuating directions
- High temperature range
- Various roller diameters
- Also available with following contacts:  
2 NC / 1 NO with overlap  
1 NC / 2 NO with overlap

**AHS-V (Form A)**

**DGHW RO20**

**DGKW RO20**

**Slow-action**
**Snap-action**

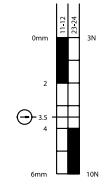
**6087135013**  
ENM2-U1Z  
AHS-V



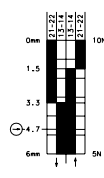
**6087385014**  
ENM2-SU1Z  
AHS-V


**Slow-action**
**Snap-action**

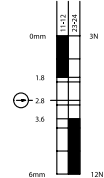
**6087121007**  
ENM2-U1Z  
DGHW RO20



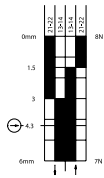
**6087371008**  
ENM2-SU1Z  
DGHW RO20


**Slow-action**
**Snap-action**

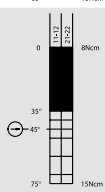
**6087127010**  
ENM2-U1Z  
DGKW RO20



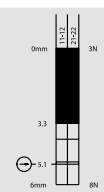
**6087377011**  
ENM2-SU1Z  
DGKW RO20



**6087835015**  
ENM2-A2Z  
AHS-V



**6087821009**  
ENM2-A2Z  
DGHW RO20



Replacement actuator: 3918350729

Replacement actuator: 3918211656

Replacement actuator: 3918271655

**Special features / variants**  
(on request)

- Available with different actuating directions

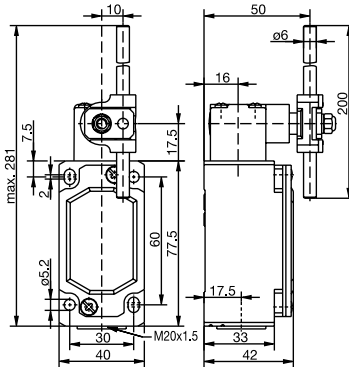
**Special features / variants**  
(on request)

- Available with different actuating directions

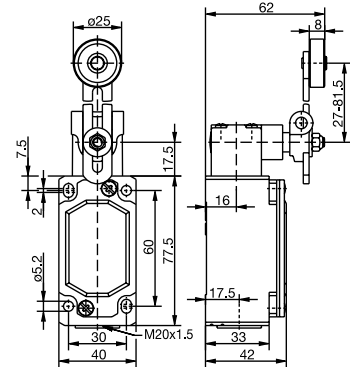
**Special features / variants**  
(on request)

- Available with different actuating directions

## AD (Form D)



## AV



### Switching operation

1 NC / 1 NO contact

2 NC contacts

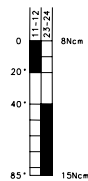
2 NO contacts

1 NC / 1 NO contact  
Overlapping

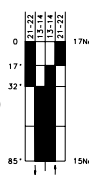
### Slow-action

### Snap-action

6087137018  
ENM2-U1 AD



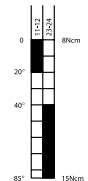
6087387019  
ENM2-SU1 AD



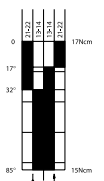
### Slow-action

### Snap-action

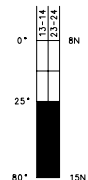
6087136016  
ENM2-U1 AV



6087386017  
ENM2-SU1 AV



6187836060  
ENM2-E2 AV



### Approvals



Replacement actuator: 3918370731

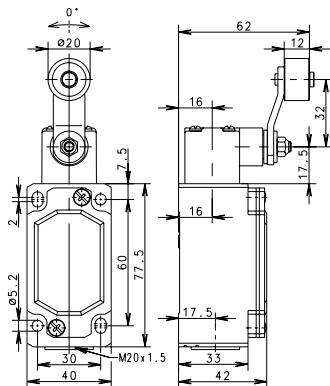
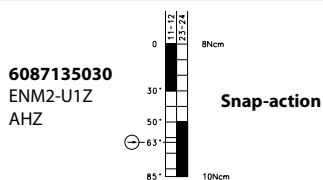
Replacement actuator: 3918360730

### Special features / variants (on request)

- Available with various actuator lengths and actuator directions

### Special features / variants (on request)

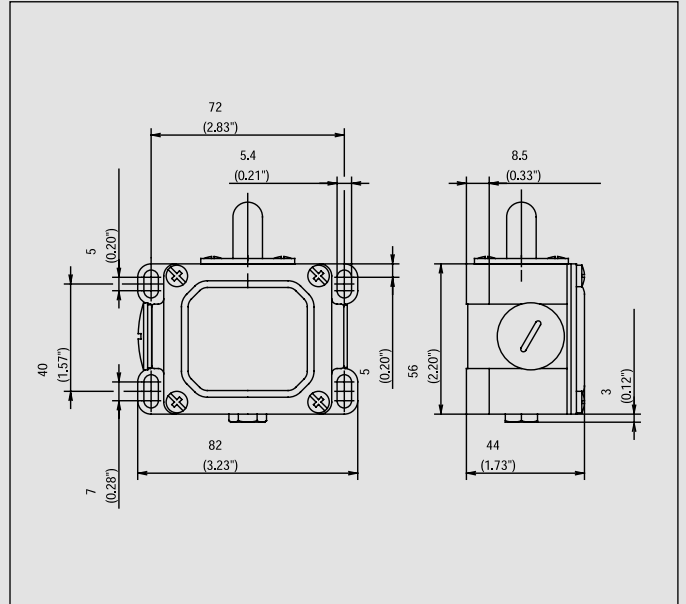
- Available with different actuating directions
- Various roller diameters
- Different lever lengths
- With roller over switch

**AHZ**

**Slow-action**

**Replacement actuator: –**
**Special features / variants**

- Positively opening action, forward and return AHZ
- For special safety applications, the positive opening action of the normally-closed contacts takes place both in forward (moving in one direction) as well as in return (moving back to home position) direction
- For personal protection applications movement of the roller must be restrained in a guide block in both directions

# Metal-Enclosed Limit Switches

## D



### Recommended use

Heavy duty enclosure for harsh operating conditions with particularly tough design of actuator and switching systems.

### Product advantages

- Protection class IP 65 to VDE 0470 T1
- Enclosure: Aluminium pressure die-casting
- Cover: Sheet aluminium
- Actuator can be repositioned by 4 x 90° (depending on type)
- Cable entries 2x M20 x 1.5
- Connection designation conforming to DIN EN 50013
- Sturdy contacts
- Hard wearing guide bushes

### Options

- AS interface versions on request
- Preassembled with customer-specific cables and connectors on request

### Design layout

- Slow-action and snap-action contacts
- Versions: 1 NC / 1NO, 2 NC, 2 NO, 3 NC, 3 NO, overlapping contacts
- All NC contacts with ⊕ in the circuit diagram are positively opening contacts
- Latching function on request

### Mounting

- 4 slots for M5 screws

### Installation advantages

- 2 cable entries for through-wiring
- Generously dimensioned connection space
- Captive cover screws

### Technical data

Electrical data	
Rated insulation voltage	U <sub>i</sub> max. 400 V AC
Conventional thermal current (up to) <sup>①</sup>	I <sub>the</sub> 10 A
Rated operating voltage	U <sub>e</sub> max. 240 V
Utilization category	AC-15, U <sub>e</sub> /I <sub>e</sub> 240 V/3 A
Short-circuit protection (up to) <sup>①</sup>	Fuse 10 A gL/gG
Protection class	I
Mechanical data	
Enclosure material	Aluminium pressure die-casting
Ambient temperature	-30 °C to + 80 °C
Mechanical service life	10 x 10 <sup>6</sup> switching cycles
B10d	20 Mill.
Switching frequency	≤ 100/min.
Type of connection	Screw connections
Conductor cross sections	Single-wire 0.5 – 1.5 mm <sup>2</sup> or Stranded wire with ferrule 0.5 – 1.5 mm <sup>2</sup>
Cable entry	2 x M20 x 1.5
Protection class	IP 65 conforming to IEC/EN 60529
Standards	
VDE 0660 T100, DIN EN 60947-1, IEC 60947-1 VDE 0660 T200, DIN EN 60947-5-1, IEC 60947-5-1	

<sup>①</sup> Depending on switching system. See Table on Pages 70 – 73.